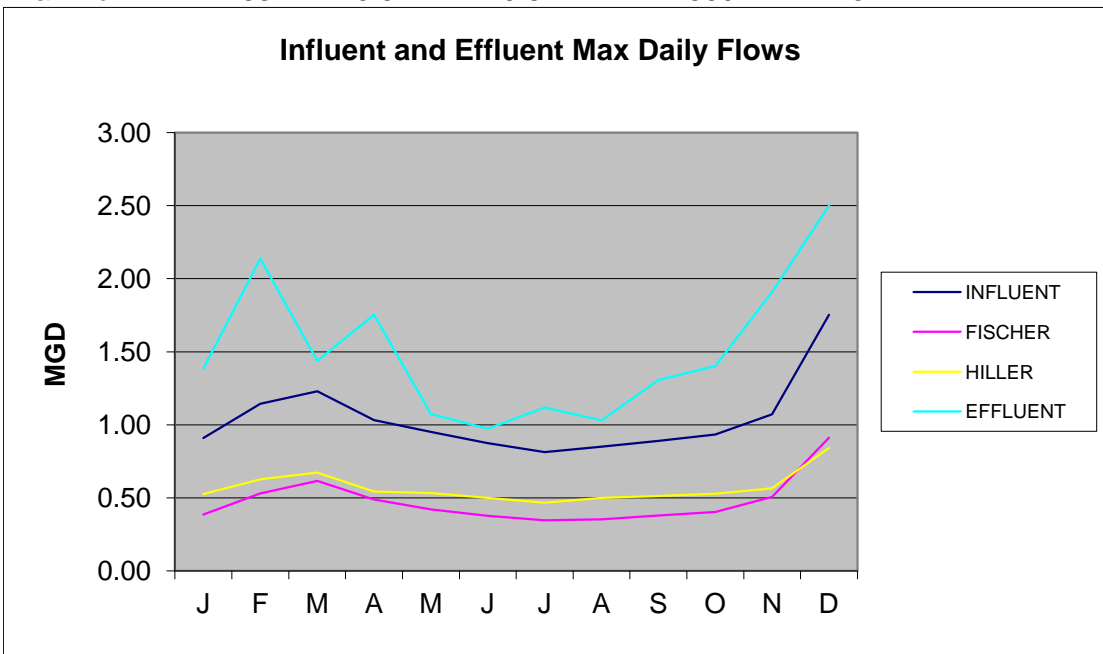


McKinleyville Community Services District
Wastewater Management Facility
Influent and Effluent Max Daily Flows in MGD
2014

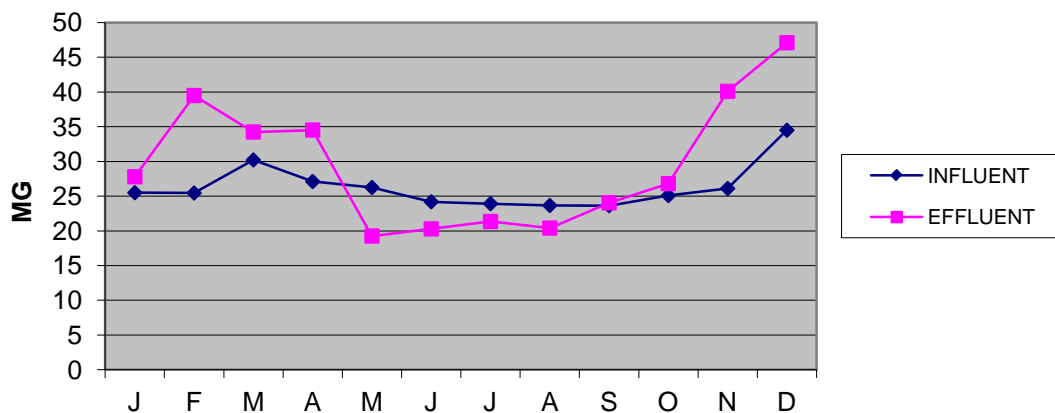
DATE	INFLUENT	FISCHER	HILLER	EFFLUENT	MAX GPM
J	0.909	0.385	0.526	1.385	1375
F	1.144	0.531	0.626	2.136	1506
M	1.229	0.615	0.673	1.437	1016
A	1.032	0.489	0.543	1.753	1815
M	0.952	0.420	0.532	1.073	1295
J	0.875	0.376	0.499	0.974	1201
J	0.813	0.347	0.467	1.118	2220
A	0.851	0.352	0.499	1.030	1289
S	0.890	0.380	0.513	1.306	1420
O	0.933	0.404	0.527	1.403	1403
N	1.071	0.506	0.565	1.909	2377
D	1.753	0.911	0.842	2.500	1852
Maximum	1.753	0.911	0.842	2.500	2377



McKinleyville Community Services District
Wastewater Management Facility
Influent and Effluent Flows in MGD 2014

DATE	INFLUENT	FISCHER	HILLER	EFFLUENT	AVERAGE GPM
J	25.499	10.624	14.875	27.796	763
F	25.454	11.193	14.261	39.492	1114
M	30.213	13.822	16.391	34.238	845
A	27.109	12.374	14.735	34.523	992
M	26.247	11.654	14.593	19.259	658
J	24.191	10.326	13.865	20.291	707
J	23.915	10.133	13.782	21.345	828
A	23.658	9.875	13.783	20.405	780
S	23.636	9.792	13.844	24.046	897
O	25.084	10.469	14.637	26.805	810
N	26.103	11.252	14.851	40.087	1128
D	34.491	16.630	17.861	47.100	1192
Total	315.600	138.144	177.478	355.387	
Average	26.300	11.512	14.790	29.616	893
Maximum	34.491	16.630	17.861	47.100	1192
Minimum	23.636	9.792	13.782	19.259	658

Influent and Effluent Totals 2014



McKINLEYVILLE COMMUNITY SERVICES DISTRICT WASTEWATER MANAGEMENT FACILITY RIVER CFS - EFFLUENT FLOWS -										
				M-004	RIVER DILUTION					
				M-005						
				M-006						
MARCH 2014										
DATE	M-INF INFLUENT MGD	M-001 EFFLUENT MGD	EFFLUENT MAXIMUM GPM	M-003 PERK PONDS MGD	M-007 IRRIGATE MGD	M-002 RIVER MGD	RIVER DILUTION 100:1	MAXIMUM G.P.M. DISCHARGE FOR 100:1	RIVER FLOW IN CFS	RIVER FLOW IN GPS
1	0.901	1.085	773			1.085	426	3295	734	5491
2	0.940	1.082	760			1.082	360	2738	610	4563
3	0.951	1.122	823			1.122	384	3160	704	5267
4	0.920	1.163	819			1.163	2121	17371	3870	28951
5	0.929	1.166	820			1.166	1067	8753	1950	14588
6	0.900	1.113	810			1.113	1690	13690	3050	22817
7	0.874	1.262	1014			1.262	1151	11670	2600	19451
8	0.910	1.434	1003			1.434	998	10010	2230	16683
9	1.227	1.414	998			1.414	935	9336	2080	15560
10	1.229	0.562	952			0.562	6554	62392	13900	103986
11	1.063	0.000	0			0.000		27380	6100	45634
12	1.002	0.804	906			0.804	1749	15845	3530	26408
13	0.981	1.075	920			1.075	1249	11491	2560	19151
14	0.934	1.067	1016			1.067	870	8843	1970	14738
15	0.970	1.437	1009			1.437	712	7182	1600	11970
16	0.998	1.432	1013			1.432	598	6060	1350	10099
17	0.939	1.429	1000			1.429	548	5476	1220	9127
18	0.909	1.433	1016			1.433	473	4803	1070	8005
19	0.915	1.422	1003			1.422	432	4331	965	7219
20	0.898	1.207	1003			1.207	394	3954	881	6591
21	0.875	1.116	843			1.116	290	2442	544	4070
22	0.901	1.207	852			1.207	219	1863	415	3105
23	0.976	1.211	881			1.211	190	1670	372	2783
24	0.898	1.205	845			1.205	178	1508	336	2514
25	0.896	1.199	843			1.199	175	1477	329	2461
26	0.957	1.058	841			1.058	273	2294	511	3823
27	0.929	0.890	658			0.890	941	6194	1380	10324
28	1.066	0.924	673			0.924	747	5027	1120	8379
29	1.158	0.909	839			0.909	4087	34293	7640	57155
30	1.113	0.902	636			0.902	4764	30298	6750	50497
31	1.054	0.908	641			0.908	3053	19570	4360	32617
TOTAL	30.213	34.238		0.000	0.000	34.238				
AVERAGE	0.975	1.104	845	0.000	0.000	1.104	1254	11110	2475	18517
MAXIMUM	1.229	1.437	1016	0.000	0.000	1.437	6554	62392	13900	103986
MINIMUM	0.874	0.000	0	0.000	0.000	0.000	175	1477	329	2461
DAYS	31	30	30	0	0					
DAYS WITH NO DISCHARGE TO THE MAD RIVER = 1										

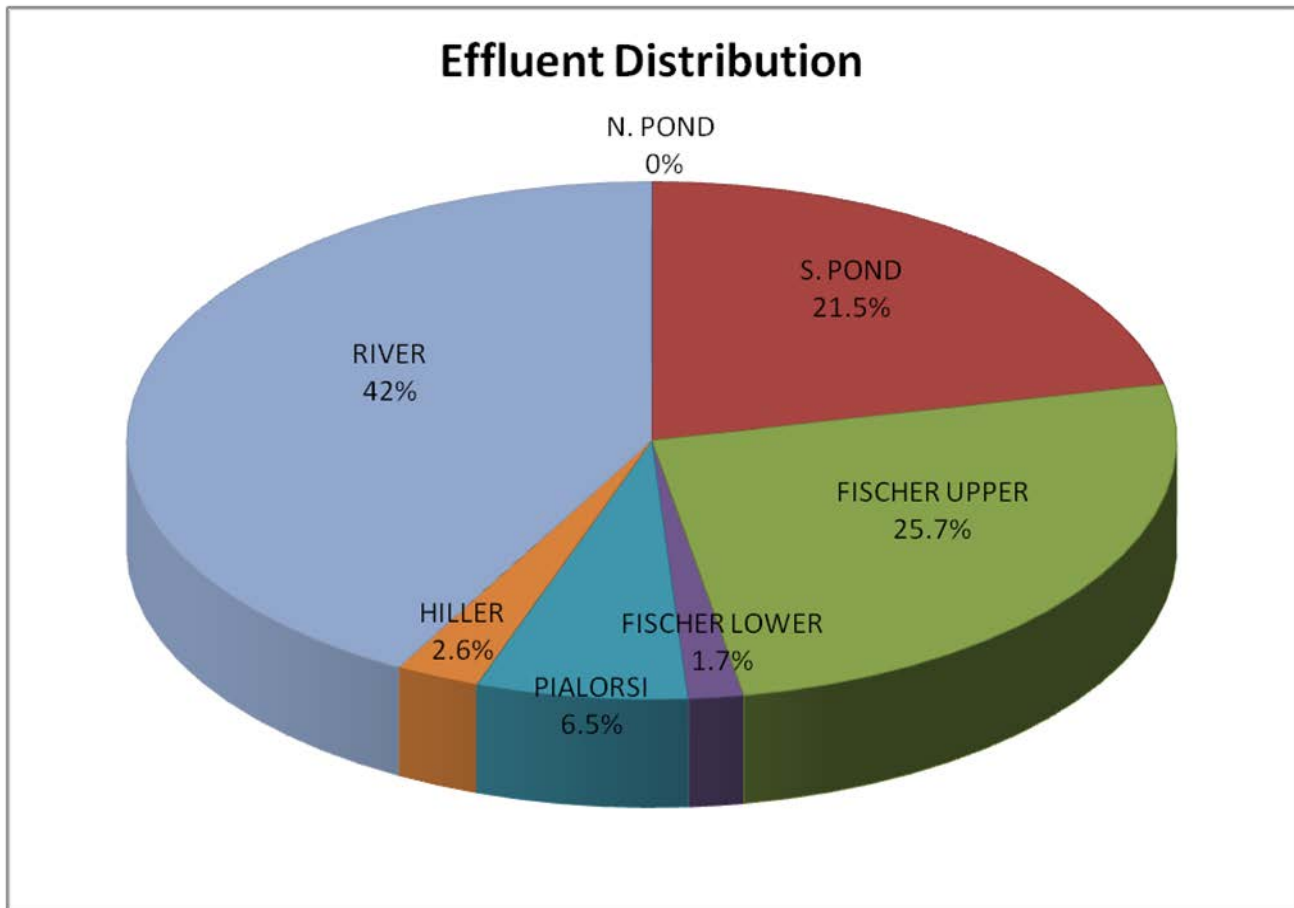
McKINLEYVILLE COMMUNITY SERVICES DISTRICT WASTEWATER MANAGEMENT FACILITY RIVER CFS - EFFLUENT FLOWS -											
					M-004	RIVER DILUTION					
					M-005						
					M-006						
APRIL 2014											
DATE	M-INF INFLUENT MGD	M-001 EFFLUENT MGD	EFFLUENT MAXIMUM GPM	M-003 PERK PONDS MGD	M-007 IRRIGATE MGD	M-002 RIVER MGD	RIVER DILUTION 100:1	MAXIMUM G.P.M. DISCHARGE FOR 100:1	RIVER FLOW IN CFS	RIVER FLOW IN GPS	
1	1.032	1.029	929		0.000	1.029	1846	17146	3820	28577	
2	0.989	1.334	945		0.000	1.334	1392	13152	2930	21919	
3	0.963	1.152	939		0.000	1.152	1123	10548	2350	17580	
4	0.940	1.246	1226		0.000	1.246	644	7900	1760	13167	
5	0.956	1.753	1224		0.000	1.753	535	6553	1460	10922	
6	0.999	1.749	1223		0.000	1.749	448	5476	1220	9127	
7	0.923	0.667	1214		0.000	0.667	399	4848	1080	8079	
8	0.898	0.000	0		0.000	0.000	0	4363	972	7272	
9	0.903	0.453	1815		0.000	0.453	213	3860	860	6434	
10	0.898	0.828	924		0.000	0.828	377	3483	776	5805	
11	0.887	1.249	1180		0.000	1.249	268	3160	704	5267	
12	0.914	1.692	1188		0.000	1.692	245	2909	648	4848	
13	0.965	1.685	1190		0.000	1.685	230	2738	610	4563	
14	0.903	1.543	1179		0.000	1.543	217	2554	569	4257	
15	0.886	1.308	921		0.000	1.308	263	2419	539	4032	
16	0.879	1.312	920		0.000	1.312	193	1773	395	2955	
17	0.878	1.163	939		0.000	1.163	138	1297	289	2162	
18	0.875	0.961	843	0.416	0.000	0.545	132	1109	247	1848	
19	0.888	0.783	554	0.783	0.000	0.000	181	1001	223	1668	
20	0.897	0.784	559	0.784	0.000	0.000	169	943	210	1571	
21	0.862	0.848	921	0.293	0.555	0.000	92	844	188	1406	
22	0.842	1.307	929		1.307	0.000	90	835	186	1391	
23	0.852	1.311	924		1.311	0.000	124	1149	256	1915	
24	0.884	1.053	925		1.053	0.000	136	1257	280	2095	
25	0.873	1.086	973		0.366	0.720	191	1863	415	3105	
26	0.857	1.385	983		0.000	1.385	189	1863	415	3105	
27	0.933	1.378	977		0.000	1.378	161	1571	350	2618	
28	0.860	1.367	973		0.000	1.367	161	1571	350	2618	
29	0.834	1.480	1272		0.000	1.480	102	1297	289	2162	
30	0.839	0.617	965		0.078	0.539	120	1163	259	1938	
31								0		0	
TOTAL	27.109	34.523		2.276	4.670	27.577					
AVERAGE	0.904	1.151	992	0.569	0.156	0.919	346	3569	822	5949	
MAXIMUM	1.032	1.753	1815	0.784	1.311	1.753	1846	17146	3820	28577	
MINIMUM	0.834	0.000	0	0.293	0.000	0.000	0	0	186	0	
DAYS	30	29	29	4	5						
DAYS WITH NO DISCHARGE TO THE MAD RIVER = 7											

McKINLEYVILLE COMMUNITY SERVICES DISTRICT WASTEWATER MANAGEMENT FACILITY RIVER CFS - EFFLUENT FLOWS -										
				M-004	RIVER DILUTION					
NOVEMBER 2014				M-005						
				M-006						
DATE	M-INF INFLUENT MGD	M-001 EFFLUENT MGD	EFFLUENT MAXIMUM GPM	M-003 PERK PONDS MGD	M-007 IRRIGATE MGD	M-002 RIVER MGD	RIVER DILUTION 100:1	MAXIMUM G.P.M. DISCHARGE FOR 100:1	RIVER FLOW IN CFS	RIVER FLOW IN GPS
1	0.864	1.019	725	1.019	0.000	0.000	0	0		0
2	0.901	1.006	719	1.006	0.000	0.000	0	0		0
3	0.817	0.636	977	0.388	0.248	0.000	0	0		0
4	0.809	0.600	2377		0.600	0.000	0	0		0
5	0.801	1.216	948		1.216	0.000	0	0		0
6	0.820	1.379	970		1.379	0.000	0	0		0
7	0.788	1.091	984	0.441	0.650	0.000	0	0		0
8	0.836	1.143	858	1.143	0.000	0.000	0	0		0
9	0.855	1.271	911	1.271	0.000	0.000	0	0		0
10	0.821	1.329	995	0.537	0.792	0.000	0	0		0
11	0.844	1.462	1040		1.462	0.000	0	0		0
12	0.807	1.567	1129		1.567	0.000	0	0		0
13	0.840	1.348	1127		1.348	0.000	0	0		0
14	0.864	1.063	814	0.635	0.428	0.000	0	0		0
15	0.866	1.153	814	1.153	0.000	0.000	0	0		0
16	0.898	1.148	812	1.148	0.000	0.000	0	0		0
17	0.829	1.196	983	0.463	0.733	0.000	0	0		0
18	0.805	1.369	984		1.369	0.000	0	0		0
19	0.858	1.376	977		1.376	0.000	0	0		0
20	0.888	1.504	1327		0.595	0.909	134	1773	395	2955
21	0.890	1.490	1409			1.490	240	3375	752	5626
22	1.071	1.764	1239			1.764	3460	42866	9550	71444
23	0.976	1.579	1805			1.579	133	2397	534	3995
24	0.901	0.856	906			0.856	443	4017	895	6695
25	0.905	1.206	1323			1.206	349	4623	1030	7705
26	0.887	1.892	1328			1.892	262	3483	776	5805
27	0.889	1.899	1338			1.899	214	2859	637	4765
28	0.829	1.902	1342			1.902	185	2487	554	4144
29	0.980	1.909	1341			1.909	262	3515	783	5858
30	0.964	1.714	1333			1.714	502	6688	1490	11147
TOTAL	26.103	40.087		9.204	13.763	17.120				
AVERAGE	0.870	1.336	1128	0.837	0.688	0.571	562	2603	1581	4338
MAXIMUM	1.071	1.909	2377	1.271	1.567	1.909	3460	42866	9550	71444
MINIMUM	0.788	0.600	719	0.388	0.000	0.000	0	0	395	0
DAYS	30	30	30	11	20	11	11	11	11	11
DAYS WITH NO DISCHARGE TO THE MAD RIVER = 19										

McKINLEYVILLE COMMUNITY SERVICES DISTRICT WASTEWATER MANAGEMENT FACILITY RIVER CFS - EFFLUENT FLOWS -										
DECEMBER 2014				M-004	RIVER DILUTION					
				M-005						
				M-006						
DATE	M-INF INFLUENT MGD	M-001 EFFLUENT MGD	M-003 EFFLUENT MAXIMUM GPM	M-003 PERK PONDS MGD	M-007 IRRIGATE MGD	M-002 RIVER MGD	RIVER DILUTION 100:1	MAXIMUM G.P.M. DISCHARGE FOR 100:1	RIVER FLOW IN CFS	RIVER FLOW IN GPS
1	0.889	0.925	1041			0.925	457	4758	1060	7930
2	0.867	0	0			0.000	0	3456	770	5760
3	0.908	0.520	967			0.520	316	3057	681	5095
4	0.871	0.723	516			0.723	686	3542	789	5903
5	0.927	1.137	1135			1.137	370	4201	936	7002
6	1.061	1.674	1187			1.674	1032	12254	2730	20423
7	1.036	1.703	1196			1.703	631	7541	1680	12568
8	0.956	1.701	1194			1.701	609	7272	1620	12119
9	0.927	1.703	1198			1.703	633	7586	1690	12643
10	1.010	1.672	1175			1.672	458	5386	1200	8977
11	1.163	1.145	1141			1.145	1479	16877	3760	28129
12	1.135	0.993	857			0.993	3457	29625	6600	49375
13	1.086	1.219	863			1.219	2606	22488	5010	37480
14	1.095	1.220	856			1.220	1610	13780	3070	22967
15	1.040	1.218	856			1.218	1159	9920	2210	16533
16	1.006	1.223	860			1.223	1054	9067	2020	15112
17	1.111	1.327	1003			1.327	1190	11940	2660	19899
18	1.063	1.220	1005			1.220	1755	17640	3930	29400
19	1.147	1.432	1215			1.432	1566	19032	4240	31719
20	1.375	1.716	1215			1.716	1784	21680	4830	36133
21	1.753	1.779	1361			1.779	5870	79897	17800	133162
22	1.478	1.934	1356			1.934	3608	48926	10900	81543
23	1.302	2.106	1767			2.106	1557	27515	6130	45859
24	1.327	2.500	1772			2.500	990	17550	3910	29251
25	1.237	2.441	1727			2.441	1021	17640	3930	29400
26	1.177	2.479	1852			2.479	737	13645	3040	22742
27	1.148	2.341	1699			2.341	684	11625	2590	19376
28	1.141	2.222	1585			2.222	600	9516	2120	15860
29	1.116	1.496	1451			1.496	554	8035	1790	13391
30	1.069	1.553	1592			1.553	443	7047	1570	11745
31	1.070	1.778	1303			1.778	427	5566	1240	9276
TOTAL	34.491	47.100		0.000	0.000	47.100				
AVERAGE	1.113	1.519	1192	0.000	0.000	1.519	1269	15421	3436	25702
MAXIMUM	1.753	2.500	1852	0.000	0.000	2.500	5870	79897	17800	133162
MINIMUM	0.867	0.000	0	0.000	0.000	0.000	0	3057	681	5095
DAYS	31	30	30	0	0					
DAYS WITH NO DISCHARGE TO THE MAD RIVER = 1										

McKINLEYVILLE COMMUNITY SERVICES DISTRICT
WASTEWATER MANAGEMENT FACILITY
EFFLUENT DISCHARGE DISPOSAL TOTALS 2014

Discharge Monitoring DATE	M-INF INFLUENT MGD	M-001 EFFLUENT MGD	002 M-003 N.POND MGD	002 M-003 S.POND MGD	004 M-005 FISCHER MGD UPPER	003 M-004 FISCHER MGD LOWER	006 M-007 PIALORSI MGD	005 M-006 HILLER MGD	IRRIGATE TOTAL MGD	001 M-002 RIVER MGD
JANUARY	25.5	27.8	0.0	8.9	16.1	0.1	0.0	2.7	18.9	0.0
FEBRUARY	25.5	39.5	0.0	4.5	2.3	0.0	0.3	0.8	3.4	17.5
MARCH	30.2	34.2	0.0	0.0	0.0	0.0	0.0	0.0	0.0	34.2
APRIL	27.1	34.5	0.0	2.3	4.0	0.0	0.0	0.7	4.7	27.6
MAY	26.2	19.3	0.0	9.3	5.5	0.0	3.6	0.9	10.0	0.0
JUNE	24.2	20.3	0.0	7.6	9.1	0.4	2.9	0.3	12.7	0.0
JULY	23.9	21.3	0.0	7.0	9.5	1.5	3.3	0.0	14.3	0.0
AUGUST	23.7	20.4	0.0	7.4	8.3	1.8	2.9	0.0	13.0	0.0
SEPTEMBER	23.6	24.0	0.0	6.6	11.8	1.2	4.1	0.3	17.4	0.0
OCTOBER	25.1	26.8	0.0	10.7	12.3	0.7	1.9	1.3	16.1	0.0
NOVEMBER	26.1	40.1	0.0	9.2	8.6	0.1	3.1	1.9	13.8	17.1
DECEMBER	34.5	47.1	0.0	0.0	0.0	0.0	0.0	0.0	0.0	47.1
Totals	315.6	355.4	0.0	73.6	87.4	5.9	22.1	8.9	124.3	143.5



**McKINLEYVILLE COMMUNITY SERVICES DISTRICT
WASTEWATER MANAGEMENT FACILITY
EFFLUENT DISCHARGE DISPOSAL**

JANUARY 2014

Discharge Monitoring	M-INF	M-001		002 M-003	002 M-003	004 M-005	003 M-004	006 M-007	005 M-006		001 M-002
DATE	INFLUENT MGD	EFFLUENT MGD	MAXIMUM GPM	N.POND MGD	S.POND MGD	FISCHER MGD UPPER	FISCHER MGD LOWER	PIALORSI MGD	HILLER MGD	IRRGATE TOTAL MGD	RIVER MGD
1	0.820	0.609	431		0.609					0.000	0.000
2	0.803	1.221	1375		0.220	0.785	0.090		0.126	1.001	0.000
3	0.789	0.976	1125		0.364	0.484	0.033		0.095	0.612	0.000
4	0.832	0.671	476		0.671					0.000	0.000
5	0.884	0.680	482		0.680					0.000	0.000
6	0.806	1.160	1137		0.260	0.774			0.126	0.900	0.000
7	0.793	1.385	1129			1.183			0.202	1.385	0.000
8	0.823	1.268	939			1.069			0.199	1.268	0.000
9	0.798	1.262	883			1.059			0.203	1.262	0.000
10	0.792	0.931	884		0.378	0.462			0.091	0.553	0.000
11	0.881	0.688	485		0.688					0.000	0.000
12	0.909	0.689	487		0.689					0.000	0.000
13	0.831	0.518	826		0.256	0.262				0.262	0.000
14	0.800	0.000	0							0.000	0.000
15	0.809	0.778	1335			0.648			0.130	0.778	0.000
16	0.806	1.145	904			1.047			0.098	1.145	0.000
17	0.787	0.821	736		0.348	0.473				0.473	0.000
18	0.838	0.671	474		0.671					0.000	0.000
19	0.865	0.666	466		0.666					0.000	0.000
20	0.862	0.944	796		0.259	0.561			0.124	0.685	0.000
21	0.812	1.138	797			0.938			0.200	1.138	0.000
22	0.792	1.138	796			0.941			0.197	1.138	0.000
23	0.793	1.039	801			0.969			0.070	1.039	0.000
24	0.776	0.820	807		0.370	0.429			0.021	0.450	0.000
25	0.821	0.579	474		0.579					0.000	0.000
26	0.897	0.624	446		0.624					0.000	0.000
27	0.822	0.962	831		0.241	0.594			0.127	0.721	0.000
28	0.797	1.176	837			0.972			0.204	1.176	0.000
29	0.848	1.168	821			0.973			0.195	1.168	0.000
30	0.818	1.171	830			0.979			0.192	1.171	0.000
31	0.795	0.898	833		0.351	0.457			0.090	0.547	0.000
TOTAL	25.499	27.796		0.000	8.924	16.059	0.123	0.000	2.690	18.872	0.000
AVERAGE	0.823	0.897	763	0.000	0.470	0.765	0.062	0.000	0.142	0.609	0.000
MAXIMUM	0.909	1.385	1375	0.000	0.689	1.183	0.090	0.000	0.204	1.385	0.000
MINIMUM	0.776	0.000	0	0.000	0.220	0.262	0.033	0.000	0.021	0.000	0.000
DAYS	31	30		0	19	21	2	0	19	21	0
DAYS WITH NO DISCHARGE = 01											

**McKINLEYVILLE COMMUNITY SERVICES DISTRICT
WASTEWATER MANAGEMENT FACILITY
EFFLUENT DISCHARGE DISPOSAL**

FEBRUARY 2014

Discharge Monitoring	M-INF	M-001		002 M-003	002 M-003	004 M-005	003 M-004	006 M-007	005 M-006		001 M-002
DATE	INFLUENT MGD	EFFLUENT MGD	MAXIMUM GPM	N.POND MGD	S.POND MGD	FISCHER MGD UPPER	FISCHER MGD LOWER	PIALORSI MGD	HILLER MGD	IRRGATE TOTAL MGD	RIVER MGD
1	0.843	0.594	484		0.843					0.000	0.000
2	0.892	0.643	451		0.892					0.000	0.000
3	0.828	1.013	975		0.277	0.288		0.076	0.187	0.551	0.000
4	0.797	1.298	993			0.510		0.097	0.190	0.797	0.000
5	0.802	1.298	986			0.521		0.093	0.188	0.802	0.000
6	0.811	1.279	984			0.544		0.075	0.192	0.811	0.000
7	0.839	0.944	865		0.361	0.388			0.090	0.478	0.000
8	0.916	0.685	481		0.916					0.000	0.000
9	0.976	0.680	475		0.976					0.000	0.000
10	0.888	1.439	1506		0.257					0.000	0.631
11	0.836	1.645	1500							0.000	0.836
12	0.886	0.988	794							0.000	0.886
13	0.967	1.035	787							0.000	0.967
14	1.144	1.432	1448							0.000	1.144
15	1.132	1.999	1396							0.000	1.132
16	1.054	2.053	1486							0.000	1.054
17	0.979	2.136	1495							0.000	0.979
18	0.919	2.130	1495							0.000	0.919
19	0.939	2.096	1482							0.000	0.939
20	0.896	1.310	1458							0.000	0.896
21	0.865	1.478	1409							0.000	0.865
22	0.897	2.022	1419							0.000	0.897
23	0.954	2.022	1417							0.000	0.954
24	0.895	2.008	1409							0.000	0.895
25	0.870	1.806	1404							0.000	0.870
26	0.886	1.310	1070							0.000	0.886
27	0.893	1.072	754							0.000	0.893
28	0.850	1.077	759							0.000	0.850
29										0.000	0.000
30										0.000	0.000
31										0.000	0.000
TOTAL	25.454	39.492		0.000	4.522	2.251	0.000	0.341	0.847	3.439	17.493
AVERAGE	0.909	1.410	1114	0.000	0.646	0.450	0.000	0.085	0.169	0.111	0.564
MAXIMUM	1.144	2.136	1506	0.000	0.976	0.544	0.000	0.097	0.192	0.811	1.144
MINIMUM	0.797	0.594	451	0.000	0.257	0.288	0.000	0.075	0.090	0.000	0.000
DAYS	28	28		0	7	5	0	4	5	5	19
DAYS WITH NO DISCHARGE = 0											

**McKINLEYVILLE COMMUNITY SERVICES DISTRICT
WASTEWATER MANAGEMENT FACILITY
EFFLUENT DISCHARGE DISPOSAL**

MARCH 2014

Discharge Monitoring	M-INF	M-001		002 M-003	002 M-003	004 M-005	003 M-004	006 M-007	005 M-006		001 M-002
DATE	INFLUENT MGD	EFFLUENT MGD	MAXIMUM GPM	N.POND MGD	S.POND MGD	FISCHER MGD UPPER	FISCHER MGD LOWER	PIALORSI MGD	HILLER MGD	IRRIGATE TOTAL MGD	RIVER MGD
1	0.901	1.085	773							0.000	1.085
2	0.940	1.082	760							0.000	1.082
3	0.951	1.122	823							0.000	1.122
4	0.920	1.163	819							0.000	1.163
5	0.929	1.166	820							0.000	1.166
6	0.900	1.113	810							0.000	1.113
7	0.874	1.262	1014							0.000	1.262
8	0.910	1.434	1003							0.000	1.434
9	1.227	1.414	998							0.000	1.414
10	1.229	0.562	952							0.000	0.562
11	1.063	0.000	0							0.000	0.000
12	1.002	0.804	906							0.000	0.804
13	0.981	1.075	920							0.000	1.075
14	0.934	1.067	1016							0.000	1.067
15	0.970	1.437	1009							0.000	1.437
16	0.998	1.432	1013							0.000	1.432
17	0.939	1.429	1000							0.000	1.429
18	0.909	1.433	1016							0.000	1.433
19	0.915	1.422	1003							0.000	1.422
20	0.898	1.207	1003							0.000	1.207
21	0.875	1.116	843							0.000	1.116
22	0.901	1.207	852							0.000	1.207
23	0.976	1.211	881							0.000	1.211
24	0.898	1.205	845							0.000	1.205
25	0.896	1.199	843							0.000	1.199
26	0.957	1.058	841							0.000	1.058
27	0.929	0.890	658							0.000	0.890
28	1.066	0.924	673							0.000	0.924
29	1.158	0.909	839							0.000	0.909
30	1.113	0.902	636							0.000	0.902
31	1.054	0.908	641							0.000	0.908
TOTAL	30.213	34.238		0.000	0.000	0.000	0.000	0.000	0.000	0.000	34.238
AVERAGE	0.975	1.104	845	0.000	0.000	0.000	0.000	0.000	0.000	0.000	1.104
MAXIMUM	1.229	1.437	1016	0.000	0.000	0.000	0.000	0.000	0.000	0.000	1.437
MINIMUM	0.874	0.000	0	0.000	0.000	0.000	0.000	0.000	0.000	0.000	0.000
DAYS	31	30		0	0	0	0	0	0	0	30
DAYS WITH NO DISCHARGE = 1											

**McKINLEYVILLE COMMUNITY SERVICES DISTRICT
WASTEWATER MANAGEMENT FACILITY
EFFLUENT DISCHARGE DISPOSAL**

APRIL 2014

Discharge Monitoring	M-INF	M-001		002 M-003	002 M-003	004 M-005	003 M-004	006 M-007	005 M-006		001 M-002
DATE	INFLUENT MGD	EFFLUENT MGD	MAXIMUM GPM	N.POND MGD	S.POND MGD	FISCHER MGD UPPER	FISCHER MGD LOWER	PIALORSI MGD	HILLER MGD	IRRGATE TOTAL MGD	RIVER MGD
1	1.032	1.029	929							0.000	1.029
2	0.989	1.334	945							0.000	1.334
3	0.963	1.152	939							0.000	1.152
4	0.940	1.246	1226							0.000	1.246
5	0.956	1.753	1224							0.000	1.753
6	0.999	1.749	1223							0.000	1.749
7	0.923	0.667	1214							0.000	0.667
8	0.898	0.000	0							0.000	0.000
9	0.903	0.453	1815							0.000	0.453
10	0.898	0.828	924							0.000	0.828
11	0.887	1.249	1180							0.000	1.249
12	0.914	1.692	1188							0.000	1.692
13	0.965	1.685	1190							0.000	1.685
14	0.903	1.543	1179							0.000	1.543
15	0.886	1.308	921							0.000	1.308
16	0.879	1.312	920							0.000	1.312
17	0.878	1.163	939							0.000	1.163
18	0.875	0.961	843		0.416					0.000	0.545
19	0.888	0.783	554		0.783					0.000	0.000
20	0.897	0.784	559		0.784					0.000	0.000
21	0.862	0.848	921		0.293	0.473			0.082	0.555	0.000
22	0.842	1.307	929			1.120			0.187	1.307	0.000
23	0.852	1.311	924			1.116			0.195	1.311	0.000
24	0.884	1.053	925			0.861			0.192	1.053	0.000
25	0.873	1.086	973			0.366				0.366	0.720
26	0.857	1.385	983							0.000	1.385
27	0.933	1.378	977							0.000	1.378
28	0.860	1.367	973							0.000	1.367
29	0.834	1.480	1272							0.000	1.480
30	0.839	0.617	965			0.048		0.030		0.078	0.539
31											
TOTAL	27.109	34.523		0.000	2.276	3.984	0.000	0.030	0.656	4.670	27.577
AVERAGE	0.904	1.151	992	0.000	0.569	0.664	0.000	0.030	0.164	0.156	0.919
MAXIMUM	1.032	1.753	1815	0.000	0.784	1.120	0.000	0.030	0.195	1.311	1.753
MINIMUM	0.834	0.000	0	0.000	0.293	0.048	0.000	0.030	0.082	0.000	0.000
DAYS	30	29		0	4	6	0	1	4	6	23
DAYS WITH NO DISCHARGE = 1											

**McKINLEYVILLE COMMUNITY SERVICES DISTRICT
WASTEWATER MANAGEMENT FACILITY
EFFLUENT DISCHARGE DISPOSAL**

MAY 2014

Discharge Monitoring	M-INF	M-001		002 M-003	002 M-003	004 M-005	003 M-004	006 M-007	005 M-006		001 M-002
DATE	INFLUENT MGD	EFFLUENT MGD	MAXIMUM GPM	N.POND MGD	S.POND MGD	FISCHER MGD UPPER	FISCHER MGD LOWER	PIALORSI MGD	HILLER MGD	IRRGATE TOTAL MGD	RIVER MGD
1	0.835	0.329	788			0.209		0.120		0.329	0.000
2	0.845	0.649	524		0.323	0.181		0.145		0.326	0.000
3	0.910	0.579	414		0.579					0.000	0.000
4	0.952	0.528	451		0.528					0.000	0.000
5	0.894	0.214	397		0.214					0.000	0.000
6	0.839	0.000	0	Washed CCB						0.000	0.000
7	0.839	0.371	1243			0.222		0.149		0.371	0.000
8	0.842	0.445	638			0.181		0.264		0.445	0.000
9	0.831	0.567	602		0.456	0.111				0.111	0.000
10	0.848	0.849	597		0.849					0.000	0.000
11	0.898	0.835	591		0.835					0.000	0.000
12	0.861	0.563	681		0.310	0.048		0.146	0.059	0.253	0.000
13	0.840	0.747	959			0.327		0.276	0.144	0.747	0.000
14	0.837	1.073	951			0.660		0.272	0.141	1.073	0.000
15	0.842	1.028	938			0.608		0.274	0.146	1.028	0.000
16	0.826	0.972	971		0.371	0.380		0.142	0.079	0.601	0.000
17	0.829	0.674	475		0.674					0.000	0.000
18	0.883	0.669	472		0.669					0.000	0.000
19	0.846	0.761	879		0.297	0.270		0.124	0.070	0.464	0.000
20	0.850	1.044	955			0.620		0.272	0.152	1.044	0.000
21	0.840	0.910	1295			0.485		0.275	0.150	0.910	0.000
22	0.842	0.634	586			0.356		0.278		0.634	0.000
23	0.810	0.639	584		0.438	0.063		0.138		0.201	0.000
24	0.796	0.609	430		0.609					0.000	0.000
25	0.801	0.598	421		0.598					0.000	0.000
26	0.880	0.601	424		0.601					0.000	0.000
27	0.855	0.501	670		0.229	0.151		0.121		0.272	0.000
28	0.834	0.453	612			0.196		0.257		0.453	0.000
29	0.831	0.490	734			0.270		0.220		0.490	0.000
30	0.796	0.478	797		0.249	0.120		0.109		0.229	0.000
31	0.815	0.449	319		0.449					0.000	0.000
TOTAL	26.247	19.259		0.000	9.278	5.458	0.000	3.582	0.941	9.981	0.000
AVERAGE	0.847	0.621	658	0.000	0.464	0.287	0.000	0.199	0.118	0.322	0.000
MAXIMUM	0.952	1.073	1295	0.000	0.849	0.660	0.000	0.278	0.152	1.073	0.000
MINIMUM	0.796	0.000	0	0.000	0.000	0.048	0.000	0.109	0.059	0.000	0.000
DAYS	31	30		0	19	19	0	18	8	19	0
DAYS WITH NO DISCHARGE = 1											

**McKINLEYVILLE COMMUNITY SERVICES DISTRICT
WASTEWATER MANAGEMENT FACILITY
EFFLUENT DISCHARGE DISPOSAL**

JUNE 2014

Discharge Monitoring	M-INF	M-001		002 M-003	002 M-003	004 M-005	003 M-004	006 M-007	005 M-006		001 M-002
DATE	INFLUENT MGD	EFFLUENT MGD	MAXIMUM GPM	N.POND MGD	S.POND MGD	FISCHER MGD UPPER	FISCHER MGD LOWER	PIALORSI MGD	HILLER MGD	IRRGATE TOTAL MGD	RIVER MGD
1	0.875	0.455	324		0.455					0.000	0.000
2	0.839	0.589	800		0.170	0.378		0.041		0.419	0.000
3	0.808	0.904	1201			0.716	0.036	0.152		0.904	0.000
4	0.813	0.963	966			0.697	0.038	0.228		0.963	0.000
5	0.809	0.836	998			0.568	0.035	0.233		0.836	0.000
6	0.798	0.605	638		0.290	0.165	0.029	0.121		0.315	0.000
7	0.795	0.538	379		0.538					0.000	0.000
8	0.867	0.539	380		0.539					0.000	0.000
9	0.826	0.295	810		0.200	0.095				0.095	0.000
10	0.811	0.000	0	Washed CCB						0.000	0.000
11	0.802	0.448	950			0.254	0.042	0.152		0.448	0.000
12	0.796	0.691	736			0.421	0.039	0.231		0.691	0.000
13	0.796	0.748	734		0.369	0.227	0.034	0.118		0.379	0.000
14	0.796	0.666	473		0.666					0.000	0.000
15	0.837	0.643	455		0.643					0.000	0.000
16	0.833	0.607	918		0.246	0.202	0.025	0.134		0.361	0.000
17	0.799	0.832	948			0.519	0.037	0.276		0.832	0.000
18	0.808	0.949	947			0.679	0.041	0.229		0.949	0.000
19	0.788	0.974	1173			0.706	0.033	0.235		0.974	0.000
20	0.774	0.883	919		0.353	0.403		0.127		0.530	0.000
21	0.777	0.639	452		0.639					0.000	0.000
22	0.824	0.630	448		0.630					0.000	0.000
23	0.798	0.736	807		0.235	0.350		0.151		0.501	0.000
24	0.782	0.946	844			0.682	0.027	0.237		0.946	0.000
25	0.808	0.894	830			0.679		0.160	0.055	0.894	0.000
26	0.782	0.795	695			0.657			0.138	0.795	0.000
27	0.770	0.777	861		0.293	0.386		0.036	0.062	0.484	0.000
28	0.774	0.555	391		0.555					0.000	0.000
29	0.811	0.551	390		0.551					0.000	0.000
30	0.795	0.603	730		0.222	0.352		0.029		0.381	0.000
31										0.000	0.000
TOTAL	24.191	20.291		0.000	7.594	9.136	0.416	2.890	0.255	12.697	0.000
AVERAGE	0.806	0.676	707	0.000	0.400	0.457	0.035	0.161	0.085	0.410	0.000
MAXIMUM	0.875	0.974	1201	0.000	0.666	0.716	0.042	0.276	0.138	0.974	0.000
MINIMUM	0.770	0.000	0	0.000	0.000	0.095	0.025	0.029	0.055	0.000	0.000
DAYS	30	29		0	18	20	12	18	3	20	0
DAYS WITH NO DISCHARGE = 1											

**McKINLEYVILLE COMMUNITY SERVICES DISTRICT
WASTEWATER MANAGEMENT FACILITY
EFFLUENT DISCHARGE DISPOSAL**

JULY 2014

Discharge Monitoring	M-INF	M-001		002 M-003	002 M-003	004 M-005	003 M-004	006 M-007	005 M-006		001 M-002
DATE	INFLUENT MGD	EFFLUENT MGD	MAXIMUM GPM	N.POND MGD	S.POND MGD	FISCHER MGD UPPER	FISCHER MGD LOWER	PIALORSI MGD	HILLER MGD	IRRGATE TOTAL MGD	RIVER MGD
1	0.783	0.798	750			0.659		0.139		0.798	0.000
2	0.769	0.878	752			0.608		0.270		0.878	0.000
3	0.754	0.812	745		0.330	0.330		0.152		0.482	0.000
4	0.731	0.595	423		0.595					0.000	0.000
5	0.734	0.588	417		0.588					0.000	0.000
6	0.802	0.581	410		0.581					0.000	0.000
7	0.792	0.701	767		0.221	0.332		0.148		0.480	0.000
8	0.766	0.933	949			0.633	0.024	0.276		0.933	0.000
9	0.783	0.969	979			0.673	0.042	0.254		0.969	0.000
10	0.755	0.960	987			0.634	0.047	0.279		0.960	0.000
11	0.749	0.888	1088		0.321	0.371	0.030	0.166		0.567	0.000
12	0.768	0.581	412		0.581					0.000	0.000
13	0.813	0.577	408		0.577					0.000	0.000
14	0.786	0.218	407		0.218					0.000	0.000
15	0.780	0.000	0	Washed CCB						0.000	0.000
16	0.762	0.644	2220			0.443	0.043	0.158		0.644	0.000
17	0.763	0.937	1306			0.729	0.039	0.169		0.937	0.000
18	0.761	0.700	1068		0.305	0.359	0.036			0.395	0.000
19	0.762	0.553	391		0.553					0.000	0.000
20	0.793	0.548	386		0.548					0.000	0.000
21	0.779	0.597	906		0.208	0.253	0.092	0.044		0.389	0.000
22	0.761	0.676	977			0.458	0.106	0.112		0.676	0.000
23	0.771	0.887	1084			0.533	0.198	0.156		0.887	0.000
24	0.775	1.118	1082			0.911	0.207			1.118	0.000
25	0.767	0.819	933		0.268	0.419	0.132			0.551	0.000
26	0.753	0.485	343		0.485					0.000	0.000
27	0.805	0.480	341		0.480					0.000	0.000
28	0.793	0.706	1238		0.189	0.246	0.126	0.145		0.517	0.000
29	0.762	0.772	1254			0.348	0.141	0.283		0.772	0.000
30	0.785	0.681	1339			0.288	0.139	0.254		0.681	0.000
31	0.758	0.663	1296			0.273	0.128	0.262		0.663	0.000
TOTAL	23.915	21.345		0.000	7.048	9.500	1.530	3.267	0.000	14.297	0.000
AVERAGE	0.771	0.689	828	0.000	0.392	0.475	0.096	0.192	0.000	0.461	0.000
MAXIMUM	0.813	1.118	2220	0.000	0.595	0.911	0.207	0.283	0.000	1.118	0.000
MINIMUM	0.731	0.000	0	0.000	0.000	0.246	0.024	0.044	0.000	0.000	0.000
DAYS	31	30		0	17	20	16	17	0	20	0
DAYS WITH NO DISCHARGE = 1											

**McKINLEYVILLE COMMUNITY SERVICES DISTRICT
WASTEWATER MANAGEMENT FACILITY
EFFLUENT DISCHARGE DISPOSAL**

AUGUST 2014

Discharge Monitoring	M-INF	M-001		002 M-003	002 M-003	004 M-005	003 M-004	006 M-007	005 M-006		001 M-002
DATE	INFLUENT MGD	EFFLUENT MGD	MAXIMUM GPM	N.POND MGD	S.POND MGD	FISCHER MGD UPPER	FISCHER MGD LOWER	PIALORSI MGD	HILLER MGD	IRRGATE TOTAL MGD	RIVER MGD
1	0.756	0.831	1279		0.264	0.317	0.126	0.124		0.567	0.000
2	0.743	0.474	338		0.474					0.000	0.000
3	0.796	0.468	332		0.468					0.000	0.000
4	0.767	0.696	1176		0.189	0.309	0.088	0.110		0.507	0.000
5	0.749	0.905	1131			0.528	0.108	0.269		0.905	0.000
6	0.759	0.889	1071			0.453	0.207	0.229		0.889	0.000
7	0.746	1.004	1100			0.715	0.054	0.235		1.004	0.000
8	0.747	0.769	897		0.234	0.386		0.149		0.535	0.000
9	0.763	0.426	300		0.426					0.000	0.000
10	0.792	0.426	301		0.426					0.000	0.000
11	0.774	0.574	977		0.163	0.209	0.089	0.113		0.411	0.000
12	0.750	0.708	1001			0.363	0.103	0.242		0.708	0.000
13	0.759	0.631	840			0.295	0.109	0.227		0.631	0.000
14	0.746	0.859	1018			0.676	0.063	0.120		0.859	0.000
15	0.737	0.792	825		0.299	0.493				0.493	0.000
16	0.739	0.540	383		0.540					0.000	0.000
17	0.792	0.540	382		0.540					0.000	0.000
18	0.772	0.488	713		0.218	0.160	0.110			0.270	0.000
19	0.769	0.778	1262			0.554	0.118	0.106		0.778	0.000
20	0.762	0.813	972			0.532	0.048	0.233		0.813	0.000
21	0.760	0.692	939			0.388	0.065	0.239		0.692	0.000
22	0.753	0.832	1045		0.332	0.319	0.060	0.121		0.500	0.000
23	0.765	0.603	426		0.603					0.000	0.000
24	0.851	0.596	421		0.596					0.000	0.000
25	0.785	0.326	901		0.227	0.099				0.099	0.000
26	0.766	0.000	0	Washed CCB						0.000	0.000
27	0.769	0.732	1289			0.372	0.191	0.169		0.732	0.000
28	0.754	1.030	1046			0.679	0.231	0.120		1.030	0.000
29	0.737	0.913	1047		0.296	0.421	0.061	0.135		0.617	0.000
30	0.749	0.535	379		0.535					0.000	0.000
31	0.751	0.535	378		0.535					0.000	0.000
TOTAL	23.658	20.405		0.000	7.365	8.268	1.831	2.941	0.000	13.040	0.000
AVERAGE	0.763	0.658	780	0.000	0.368	0.413	0.108	0.173	0.000	0.421	0.000
MAXIMUM	0.851	1.030	1289	0.000	0.603	0.715	0.231	0.269	0.000	1.030	0.000
MINIMUM	0.737	0.000	0	0.000	0.000	0.099	0.048	0.106	0.000	0.000	0.000
DAYS	31	30		0	19	20	17	17	0	20	0
DAYS WITH NO DISCHARGE = 0											

**McKINLEYVILLE COMMUNITY SERVICES DISTRICT
WASTEWATER MANAGEMENT FACILITY
EFFLUENT DISCHARGE DISPOSAL**

SEPTEMBER 2014

Discharge Monitoring	M-INF	M-001		002 M-003	002 M-003	004 M-005	003 M-004	006 M-007	005 M-006		001 M-002
DATE	INFLUENT MGD	EFFLUENT MGD	MAXIMUM GPM	N.POND MGD	S.POND MGD	FISCHER MGD UPPER	FISCHER MGD LOWER	PIALORSI MGD	HILLER MGD	IRRGATE TOTAL MGD	RIVER MGD
1	0.846	0.524	372		0.524					0.000	0.000
2	0.767	0.669	1133		0.190	0.273	0.096	0.110		0.479	0.000
3	0.754	0.644	917			0.293	0.106	0.245		0.644	0.000
4	0.750	0.632	1251			0.343	0.046	0.243		0.632	0.000
5	0.747	0.535	917		0.271	0.090	0.044	0.130		0.264	0.000
6	0.781	0.491	348		0.491					0.000	0.000
7	0.849	0.483	342		0.483					0.000	0.000
8	0.780	0.683	928		0.185	0.293	0.090	0.115		0.498	0.000
9	0.762	0.824	1420			0.483	0.089	0.252		0.824	0.000
10	0.774	1.106	1175			0.823	0.039	0.244		1.106	0.000
11	0.761	1.096	1120			0.813	0.042	0.241		1.096	0.000
12	0.762	1.088	1130		0.289	0.624	0.038	0.137		0.799	0.000
13	0.774	0.513	370		0.513					0.000	0.000
14	0.846	0.509	360		0.509					0.000	0.000
15	0.771	0.897	1357		0.184	0.398	0.037	0.278		0.713	0.000
16	0.757	1.288	1370			0.809	0.036	0.443		1.288	0.000
17	0.770	1.056	1026			0.758	0.043	0.255		1.056	0.000
18	0.767	1.124	1195			0.831	0.040	0.253		1.124	0.000
19	0.763	0.949	1158		0.254	0.515	0.041	0.139		0.695	0.000
20	0.781	0.456	326		0.456					0.000	0.000
21	0.846	0.445	314		0.445					0.000	0.000
22	0.760	0.767	1193		0.174	0.382	0.091	0.120		0.593	0.000
23	0.740	1.153	1191			0.794	0.100	0.259		1.153	0.000
24	0.890	1.306	1403			0.970		0.254	0.082	1.306	0.000
25	0.801	1.116	1231			0.960			0.156	1.116	0.000
26	0.783	0.743	671		0.301	0.352			0.090	0.442	0.000
27	0.811	0.565	401		0.565					0.000	0.000
28	0.862	0.564	398		0.564					0.000	0.000
29	0.787	0.758	898		0.214	0.324	0.101	0.119		0.544	0.000
30	0.794	1.062	987			0.710	0.106	0.246		1.062	0.000
31										0.000	0.000
TOTAL	23.636	24.046		0.000	6.612	11.838	1.185	4.083	0.328	17.434	0.000
AVERAGE	0.788	0.802	897	0.000	0.367	0.564	0.066	0.215	0.109	0.562	0.000
MAXIMUM	0.890	1.306	1420	0.000	0.565	0.970	0.106	0.443	0.156	1.306	0.000
MINIMUM	0.740	0.445	314	0.000	0.174	0.090	0.036	0.110	0.082	0.000	0.000
DAYS	30	30		0	18	21	18	19	3	21	0
DAYS WITH NO DISCHARGE = 0											

**McKINLEYVILLE COMMUNITY SERVICES DISTRICT
WASTEWATER MANAGEMENT FACILITY
EFFLUENT DISCHARGE DISPOSAL**

OCTOBER 2014

Discharge Monitoring	M-INF	M-001		002 M-003	002 M-003	004 M-005	003 M-004	006 M-007	005 M-006		001 M-002
DATE	INFLUENT MGD	EFFLUENT MGD	MAXIMUM GPM	N.POND MGD	S.POND MGD	FISCHER MGD UPPER	FISCHER MGD LOWER	PIALORSI MGD	HILLER MGD	IRRGATE TOTAL MGD	RIVER MGD
1	0.774	1.060	923			0.756		0.304		1.060	0.000
2	0.794	0.896	979			0.668	0.045	0.183		0.896	0.000
3	0.766	0.599	870		0.206	0.350	0.043			0.393	0.000
4	0.807	0.385	274		0.385					0.000	0.000
5	0.854	0.385	275		0.385					0.000	0.000
6	0.795	0.745	982		0.144	0.390	0.091	0.120		0.601	0.000
7	0.753	1.062	973			0.710	0.104	0.248		1.062	0.000
8	0.786	0.765	1403			0.472	0.041	0.252		0.765	0.000
9	0.769	0.682	576			0.388	0.047	0.247		0.682	0.000
10	0.739	0.822	816		0.473	0.170	0.044	0.135		0.349	0.000
11	0.788	0.894	631		0.894					0.000	0.000
12	0.840	0.886	625		0.886					0.000	0.000
13	0.797	0.876	619		0.876					0.000	0.000
14	0.779	0.791	868		0.334	0.336	0.039		0.082	0.457	0.000
15	0.788	0.902	763			0.750			0.152	0.902	0.000
16	0.766	0.842	761			0.752			0.090	0.842	0.000
17	0.763	0.586	648		0.152	0.434				0.434	0.000
18	0.808	0.285	203		0.285					0.000	0.000
19	0.848	0.286	202		0.286					0.000	0.000
20	0.854	0.732	1086		0.109	0.487	0.053		0.083	0.623	0.000
21	0.788	1.187	1086			0.973	0.056		0.158	1.187	0.000
22	0.801	1.135	991			0.982			0.153	1.135	0.000
23	0.933	1.050	995		0.500	0.480			0.070	0.550	0.000
24	0.832	0.940	666		0.940					0.000	0.000
25	0.870	0.931	657		0.931					0.000	0.000
26	0.908	0.931	663		0.931					0.000	0.000
27	0.827	1.075	1209		0.358	0.458	0.055	0.120	0.084	0.717	0.000
28	0.793	1.403	1212			0.956	0.043	0.248	0.156	1.403	0.000
29	0.810	1.393	1186			1.243			0.150	1.393	0.000
30	0.800	1.242	1181		0.616	0.537			0.089	0.626	0.000
31	0.855	1.037	790		1.037					0.000	0.000
TOTAL	25.084	26.805		0.000	10.728	12.292	0.661	1.857	1.267	16.077	0.000
AVERAGE	0.809	0.865	810	0.000	0.536	0.615	0.055	0.206	0.115	0.519	0.000
MAXIMUM	0.933	1.403	1403	0.000	1.037	1.243	0.104	0.304	0.158	1.403	0.000
MINIMUM	0.739	0.285	202	0.000	0.109	0.170	0.039	0.120	0.070	0.000	0.000
DAYS	31	31		0	20	20	12	9	11	20	0
DAYS WITH NO DISCHARGE = 0											

**McKINLEYVILLE COMMUNITY SERVICES DISTRICT
WASTEWATER MANAGEMENT FACILITY
EFFLUENT DISCHARGE DISPOSAL**

NOVEMBER 2014

Discharge Monitoring	M-INF	M-001		002 M-003	002 M-003	004 M-005	003 M-004	006 M-007	005 M-006		001 M-002
DATE	INFLUENT MGD	EFFLUENT MGD	MAXIMUM GPM	N.POND MGD	S.POND MGD	FISCHER MGD UPPER	FISCHER MGD LOWER	PIALORSI MGD	HILLER MGD	IRRGATE TOTAL MGD	RIVER MGD
1	0.864	1.019	725		1.019					0.000	0.000
2	0.901	1.006	719		1.006					0.000	0.000
3	0.817	0.636	977		0.388	0.248				0.248	0.000
4	0.809	0.600	2377			0.331	0.059	0.135	0.075	0.600	0.000
5	0.801	1.216	948			0.704	0.070	0.255	0.187	1.216	0.000
6	0.820	1.379	970			0.825		0.360	0.194	1.379	0.000
7	0.788	1.091	984		0.441	0.396		0.165	0.089	0.650	0.000
8	0.836	1.143	858		1.143					0.000	0.000
9	0.855	1.271	911		1.271					0.000	0.000
10	0.821	1.329	995		0.537	0.445		0.225	0.122	0.792	0.000
11	0.844	1.462	1040			0.927		0.345	0.190	1.462	0.000
12	0.807	1.567	1129			1.157		0.218	0.192	1.567	0.000
13	0.840	1.348	1127			0.836		0.323	0.189	1.348	0.000
14	0.864	1.063	814		0.635	0.178		0.162	0.088	0.428	0.000
15	0.866	1.153	814		1.153					0.000	0.000
16	0.898	1.148	812		1.148					0.000	0.000
17	0.829	1.196	983		0.463	0.483		0.133	0.117	0.733	0.000
18	0.805	1.369	984			0.903		0.270	0.196	1.369	0.000
19	0.858	1.376	977			0.846		0.337	0.193	1.376	0.000
20	0.888	1.504	1327			0.353		0.157	0.085	0.595	0.909
21	0.890	1.490	1409							0.000	1.490
22	1.071	1.764	1239							0.000	1.764
23	0.976	1.579	1805							0.000	1.579
24	0.901	0.856	906							0.000	0.856
25	0.905	1.206	1323							0.000	1.206
26	0.887	1.892	1328							0.000	1.892
27	0.889	1.899	1338							0.000	1.899
28	0.829	1.902	1342							0.000	1.902
29	0.980	1.909	1341							0.000	1.909
30	0.964	1.714	1333							0.000	1.714
TOTAL	26.103	40.087		0.000	9.204	8.632	0.129	3.085	1.917	13.763	17.120
AVERAGE	0.870	1.336	1128	0.000	0.837	0.617	0.065	0.237	0.147	0.459	0.571
MAXIMUM	1.071	1.909	2377	0.000	1.271	1.157	0.070	0.360	0.196	1.567	1.909
MINIMUM	0.788	0.600	719	0.000	0.388	0.178	0.059	0.133	0.075	0.000	0.000
DAYS	30	30		0	11	14	2	13	13	14	11
DAYS WITH NO DISCHARGE = 0											

**McKINLEYVILLE COMMUNITY SERVICES DISTRICT
WASTEWATER MANAGEMENT FACILITY
EFFLUENT DISCHARGE DISPOSAL**

DECEMBER 2014

Discharge Monitoring	M-INF	M-001		002 M-003	002 M-003	004 M-005	003 M-004	006 M-007	005 M-006		001 M-002
DATE	INFLUENT MGD	EFFLUENT MGD	MAXIMUM GPM	N.POND MGD	S.POND MGD	FISCHER MGD UPPER	FISCHER MGD LOWER	PIALORSI MGD	HILLER MGD	IRRGATE TOTAL MGD	RIVER MGD
1	0.889	0.925	1041							0.000	0.925
2	0.867	0.000	0	Washed CCB						0.000	0.000
3	0.908	0.520	967							0.000	0.520
4	0.871	0.723	516							0.000	0.723
5	0.927	1.137	1135							0.000	1.137
6	1.061	1.674	1187							0.000	1.674
7	1.036	1.703	1196							0.000	1.703
8	0.956	1.701	1194							0.000	1.701
9	0.927	1.703	1198							0.000	1.703
10	1.010	1.672	1175							0.000	1.672
11	1.163	1.145	1141							0.000	1.145
12	1.135	0.993	857							0.000	0.993
13	1.086	1.219	863							0.000	1.219
14	1.095	1.220	856							0.000	1.220
15	1.040	1.218	856							0.000	1.218
16	1.006	1.223	860							0.000	1.223
17	1.111	1.327	1003							0.000	1.327
18	1.063	1.220	1005							0.000	1.220
19	1.147	1.432	1215							0.000	1.432
20	1.375	1.716	1215							0.000	1.716
21	1.753	1.779	1361							0.000	1.779
22	1.478	1.934	1356							0.000	1.934
23	1.302	2.106	1767							0.000	2.106
24	1.327	2.500	1772							0.000	2.500
25	1.237	2.441	1727							0.000	2.441
26	1.177	2.479	1852							0.000	2.479
27	1.148	2.341	1699							0.000	2.341
28	1.141	2.222	1585							0.000	2.222
29	1.116	1.496	1451							0.000	1.496
30	1.069	1.553	1592							0.000	1.553
31	1.070	1.778	1303							0.000	1.778
TOTAL	34.491	47.100		0.000	0.000	0.000	0.000	0.000	0.000	0.000	47.100
AVERAGE	1.113	1.519	1192	0.000	0.000	0.000	0.000	0.000	0.000	0.000	1.519
MAXIMUM	1.753	2.500	1852	0.000	0.000	0.000	0.000	0.000	0.000	0.000	2.500
MINIMUM	0.867	0.000	0	0.000	0.000	0.000	0.000	0.000	0.000	0.000	0.000
DAYS	31	30		0	0	0	0	0	0	0	30
DAYS WITH NO DISCHARGE = 1											

McKINLEYVILLE COMMUNITY SERVICES DISTRICT
WASTEWATER MANAGEMENT FACILITY
MONITORING DATA

MONTH: JANUARY

YEAR: 2014

DATE	INFLUENT FLOW M.G.D.	EFFLUENT FLOW M.G.D.	EFFLUENT MAXIMUM GPM	RIVER CFS	INFLUENT MONITORING		(C°)		B.O.D.	NFR	EFFLUENT MONITORING		RIVER	SETTLABLE	3X5
					B.O.D. mg/L	N.F.R. mg/L	pH	TEMP	mg/L	mg/L	AMMONIA	CL ₂ RES.	CL ₂ RES	SOLIDS	TOTAL COLIFORM
1	0.820	0.609	431												
2	0.803	1.221	1375				7.1	9.3			32	3.4			
3	0.789	0.976	1125		250	350	7.1	8.8	34	34	30	1.0		<0.1	
4	0.832	0.671	476												
5	0.884	0.680	482												
6	0.806	1.160	1137				7	8.2			34	2.1			<1.8
7	0.793	1.385	1129				7.1	9.1			36	0.8			
8	0.823	1.268	939				7.0	10.7			34	0.2			
9	0.798	1.262	883				7.0	9.7			36	1.6			
10	0.792	0.931	884		370	1100	6.9	9.5	35	36	36	2.0		<0.1	
11	0.881	0.688	485												
12	0.909	0.689	487												
13	0.831	0.518	826				6.8	9.9			32	2.6			<1.8
14	0.800	0.000	0				Washed CCB								
15	0.809	0.778	1335				7.0	10.9			32	0.4			
16	0.806	1.145	904				7.1	10.4			32	2.5			
17	0.787	0.821	736		260	250	6.8	9.2	40	30	32	3.7		<0.1	
18	0.838	0.671	474												
19	0.865	0.666	466												
20	0.862	0.944	796				6.9	9.6			36	6.3			<1.8
21	0.812	1.138	797				6.8	9.2			36	4.2			
22	0.792	1.138	796				6.5	10.0			32	4.1			
23	0.793	1.039	801				6.9	9.5			32	5.3			
24	0.776	0.820	807		320	270	6.8	10.6	38	30	34	5.1		<0.1	
25	0.821	0.579	474												
26	0.897	0.624	446												
27	0.822	0.962	831				7.4	11.2			36	11			<1.8
28	0.797	1.176	837				7.1	10.6			38	3.8			
29	0.848	1.168	821				7.2	12.0			32	2.9			
30	0.818	1.171	830				7.4	11.5			34	4.1			
31	0.795	0.898	833		270	210	6.8	9.7	45	44	40	0.1		<0.1	

DATE	MONTHLY TESTS			
	TDS	AMMONIA	NITRATE	BORON
1/31/2014	320	34.0	ND	310

Semi-Annual Tests	Value in ug/l
Bis phthalate	N/A
alph-BHC	N/A
4,4' -DDT	N/A
carbon tetrachloride	N/A

Quarterly Tests	Value in ug/l
Dichlorobromomethane	ND
Bromoform	ND
Chlorodibromomethane	ND
Chloroform	DNQ

SPILLS:						
None to report						
	BOD mg/L	BOD LBS/DAY	BOD % Removal	NFR mg/L	NFR LBS/DAY	NFR % Removal
30 DAY AVERAGE	38	284	87	35	259	89

ACUTE TOXICITY	
DATE	% Survival
Rainbow Trout	N/A
C. dubia	N/A
	N/A

CHRONIC TOXICITY	
TESTED	SURVIVAL
Minnow	N/A
C. Dubia	N/A
Algae	N/A
	TUc

Total Coliform
Monthly
MEDIAN
<1.8
Daily
Maximum
<1.8

SIGNATURE: _____

REMARKS:

 Indicates Permit Exceedance

McKINLEYVILLE COMMUNITY SERVICES DISTRICT
WASTEWATER MANAGEMENT FACILITY
MONITORING DATA

MONTH: FEBRUARY

YEAR: 2014

DATE	INFLUENT FLOW M.G.D.	EFFLUENT FLOW M.G.D.	EFFLUENT MAXIMUM GPM	RIVER CFS	INFLUENT MONITORING		(C°)		B.O.D.	NFR	EFFLUENT MONITORING		RIVER	SETTLABLE	3X5
					B.O.D. mg/L	N.F.R. mg/L	pH	TEMP	mg/L	mg/L	AMMONIA	CL ₂ RES.	CL ₂ RES	SOLIDS	TOTAL COLIFORM
1	0.843	0.594	484												
2	0.892	0.643	451												
3	0.828	1.013	975				6.8	9.8			38	9.1			<1.8
4	0.797	1.298	993				6.8	9.8			36	4.5			
5	0.802	1.298	986				6.8	9.3			38	5.1			
6	0.811	1.279	984				6.8	9.9			36	5.9			
7	0.839	0.944	865		300	210	6.8	10.0	39	27	38	4.7		<0.1	
8	0.916	0.685	481												
9	0.976	0.680	475												
10	0.888	1.439	1506	2610			7.0	11.1			32	3.9	< 0.01		<1.8
11	0.836	1.645	1500	1100			7.0	12.0			34	0.8	< 0.01		
12	0.886	0.988	794	704			6.9	11.7			38	0.6	< 0.01		
13	0.967	1.035	787	2750			6.9	11.6			36	0.9	< 0.01		
14	1.144	1.432	1448	3220	380	260	6.7	12.2	45	28	40	3.5	< 0.01	<0.1	
15	1.132	1.999	1396	3720			7.0	12.7				0.7	< 0.01		
16	1.054	2.053	1486	3840			7.0	12.2				3.5	< 0.01		
17	0.979	2.136	1495	2350			7.0	12.6				0.5	< 0.01		
18	0.919	2.130	1495	1490			7.0	13.3			30	4.3	< 0.01		<1.8
19	0.939	2.096	1482	1750			7	12.3			36	5.2	< 0.01		
20	0.896	1.310	1458	1490			7	11.7			32	0.4	< 0.01		
21	0.865	1.478	1409	1130	360	340	6.8	11.2	41	27	36	5.9	< 0.01	<0.1	
22	0.897	2.022	1419	881			7.2	11.9				1.6	< 0.01		
23	0.954	2.022	1417	716			7.2	12.3				2.4	< 0.01		
24	0.895	2.008	1409	594			7.0	12.3			36	3.4	< 0.01		<1.8
25	0.870	1.806	1404	506			7.1	11.9			32	5.5	< 0.01		
26	0.886	1.310	1070	431			7.3	13.1			36	2.9	< 0.01		
27	0.893	1.072	754	411			6.7	12.2			36	3.3	< 0.01		
28	0.850	1.077	759	957	520	420	6.7	12.4	39	23	36	4.6	< 0.01	<0.1	
29															
30															
31															

DATE	MONTHLY TESTS			
	TDS	AMMONIA	NITRATE	BORON
2/28/2014	300	27.0	ND	280

Semi-Annual Tests	Value in ug/l
Bis phthalate	N/A
alph-BHC	N/A
4,4' -DDT	N/A
carbon tetrachloride	N/A

Quarterly Tests	Value in ug/l
Dichlorobromomethane	N/A
Bromoform	N/A
Chlorodibromomethane	N/A
Chloroform	N/A

SPILLS:						
None to report						
BOD mg/L	BOD LBS/DAY	BOD % Removal	NFR mg/L	NFR LBS/DAY	NFR % Removal	
41	425	89	26	272	91	

ACUTE TOXICITY	
DATE	% Survival
2/14/2014	100%
2/14/2014	100%

Rainbow Trout
C. dubia

CHRONIC TOXICITY	
TESTED	SURVIVAL
Minnow	N/A
C. Dubia	N/A
Algae	N/A
	TUc

Total Coliform
Monthly
MEDIAN
<1.8
Daily
Maximum
<1.8

SIGNATURE: _____

REMARKS:

 Indicates Permit Exceedance

McKINLEYVILLE COMMUNITY SERVICES DISTRICT
WASTEWATER MANAGEMENT FACILITY
MONITORING DATA

MONTH: MARCH

YEAR: 2014

DATE	INFLUENT FLOW M.G.D.	EFFLUENT FLOW M.G.D.	EFFLUENT MAXIMUM GPM	RIVER CFS	INFLUENT MONITORING		(C°)		B.O.D.	NFR	EFFLUENT MONITORING				3X5 TOTAL COLIFORM
					B.O.D. mg/L	N.F.R. mg/L	pH	TEMP	mg/L	mg/L	AMMONIA	CL ₂ RES.	RIVER CL ₂ RES	SETTLABLE SOLIDS	
1	0.901	1.085	773	734			6.8	12.2				4.6	0.00		
2	0.940	1.082	760	610			6.8	13.2				3.1	0.00		
3	0.951	1.122	823	704			6.8	13.8			30	2.0	0.00		<1.8
4	0.920	1.163	819	3870			6.9	13.7			32	1.2	0.00		
5	0.929	1.166	820	1950			6.7	13.9			36	1.3	0.00		
6	0.900	1.113	810	3050			6.8	13.9			36	1.0	0.00		
7	0.874	1.262	1014	2600	240	220	6.8	13.7	29	21	28	4.7	0.00	<0.1	
8	0.910	1.434	1003	2230			7.3	14.1				0.6	0.00		
9	1.227	1.414	998	2080			7.0	14.8				1.2	0.00		
10	1.229	0.562	952	13900			6.8	14.4			32	2.8	0.00		<1.8
11	1.063	0.000	0	6100			Washed CCB								
12	1.002	0.804	906	3530			6.9	13.8			34	3.2	0.00		
13	0.981	1.075	920	2560			6.9	13.0			32	1.1	0.00		
14	0.934	1.067	1016	1970	300	260	6.8	13.0	26	21	34	3.1	0.00	<0.1	
15	0.970	1.437	1009	1600			7.0	14.2				0.1	0.00		
16	0.998	1.432	1013	1350			7.0	14.1				0.7	0.00		
17	0.939	1.429	1000	1220			7.1	13.5			32	3.8	0.00		<1.8
18	0.909	1.433	1016	1070			7.0	13.0			26	1.6	0.00		
19	0.915	1.422	1003	965			6.9	13.0			34	3.9	0.00		
20	0.898	1.207	1003	881			7.0	13.4			26	5.1	0.00		
21	0.875	1.116	843	544	270	260	6.9	12.6	19	18	34	4.7	0.00	<0.1	
22	0.901	1.207	852	415			6.9	12.8				2.1	0.00		
23	0.976	1.211	881	372			6.9	13.0				1.8	0.00		
24	0.898	1.205	845	336			6.8	13.0			32	1.0	0.00		<1.8
25	0.896	1.199	843	329			6.9	13.0			34	1.0	0.00		
26	0.957	1.058	841	511			6.8	14.1			34	0.4	0.00		
27	0.929	0.890	658	1380			6.9	13.4			34	2.9	0.00		
28	1.066	0.924	673	1120	190	230	6.8	13.8	16	19	38	3.8	0.00	<0.1	
29	1.158	0.909	839	7640			7.3	14.9				6.3	0.00		
30	1.113	0.902	636	6750			6.9	13.7				0.8	0.00		
31	1.054	0.908	641	4360			6.9	13.5			34	2.8	0.00		<1.8

DATE	MONTHLY TESTS			
	TDS	AMMONIA	NITRATE	BORON
3/31/2014	250	30.0	ND	250

Semi-Annual Tests	Value in ug/l
Bis phthalate	NA
alph-BHC	NA
4,4' -DDT	NA
carbon tetrachloride	NA

Quarterly Tests	Value in ug/l
Dichlorobromomethane	NA
Bromoform	NA
Chlorodibromomethane	NA
Chloroform	NA

SPILLS:						
None to report						
BOD mg/L	BOD LBS/DAY	BOD % Removal	NFR mg/L	NFR LBS/DAY	NFR % Removal	
23	209	91	20	180	92	

ACUTE TOXICITY	
DATE	% Survival
3/4/2014	95%
3/4/2014	85%
4/1/2014	90%

Rainbow Trout
C. dubia

CHRONIC TOXICITY	
TESTED	SURVIVAL
Minnnow	1.3
C. Dubia	1.3
Algae	1.3
	TUc

Total Coliform
Monthly
MEDIAN
<1.8
Daily
Maximum
<1.8

SIGNATURE: _____

REMARKS:

 Indicates Permit Exceedance

McKINLEYVILLE COMMUNITY SERVICES DISTRICT
WASTEWATER MANAGEMENT FACILITY
MONITORING DATA

MONTH: APRIL

YEAR: 2014

DATE	INFLUENT FLOW M.G.D.	EFFLUENT FLOW M.G.D.	EFFLUENT MAXIMUM GPM	RIVER CFS	INFLUENT MONITORING		(C°)		B.O.D.	NFR	EFFLUENT MONITORING				3X5 TOTAL COLIFORM
					B.O.D. mg/L	N.F.R. mg/L	pH	TEMP	mg/L	mg/L	AMMONIA	CL ₂ RES.	RIVER CL ₂ RES	SETTLABLE SOLIDS	
1	1.032	1.029	929	3820			6.9	13.4			34	4.5	0.00		
2	0.989	1.334	945	2930			6.9	12.7			36	0.4	0.00		
3	0.963	1.152	939	2350			6.7	13.1			36	0.2	0.00		
4	0.940	1.246	1226	1760	190	210	6.8	13.7	29	21	34	3.5	0.00	<0.1	
5	0.956	1.753	1224	1460			6.9	14.1				1.7	0.00		
6	0.999	1.749	1223	1220			7	14.9				2	0.00		
7	0.923	0.667	1214	1080			6.9	15.2			34	2.8	0.00		<1.8
8	0.898	0.000	0	972			Washed CCB								
9	0.903	0.453	1815	860			6.8	14.2			32	0.2	0.00		
10	0.898	0.828	924	776			6.6	14.1			30	3.1	0.00		
11	0.887	1.249	1180	704	240	580	6.9	14.1	26	21	36	1.5	0.00	<0.1	
12	0.914	1.692	1188	648			6.9	14.9				0.5	0.00		
13	0.965	1.685	1190	610			6.9	15.2				1.2	0.00		
14	0.903	1.543	1179	569			6.9	15.6			36	2.6	0.00		<1.8
15	0.886	1.308	921	539			6.8	15.7			32	9.2	0.00		
16	0.879	1.312	920	395			6.8	15.4			28	5.4	0.00		
17	0.878	1.163	939	289			6.9	15.6			34	3.6	0.00		
18	0.875	0.961	843	247	330	290	6.8	14.6	19	18	36	0.1	0.00	<0.1	
19	0.888	0.783	554	223											
20	0.897	0.784	559	210											
21	0.862	0.848	921	188			6.9	15.4			28	3.2			<1.8
22	0.842	1.307	929	186			7.0	15.1			34	0.2			
23	0.852	1.311	924	256			6.9	15.3			34	3.5			
24	0.884	1.053	925	280			6.7	14.8			32	0.5			
25	0.873	1.086	973	415	280	280	6.7	15.1	16	19	36	8.2	0.00	<0.1	
26	0.857	1.385	983	415			6.9	15.3				3.3	0.00		
27	0.933	1.378	977	350			7	15.4				2.3	0.00		
28	0.860	1.367	973	350			7.0	15.4			38	3.7	0.00		<1.8
29	0.834	1.480	1272	289			7.0	15.8			34	4.9	0.00		
30	0.839	0.617	965	259			7.0	17.3			30	4.9	0.00		
31															

DATE	MONTHLY TESTS			
	TDS	AMMONIA	NITRATE	BORON
4/30/2014	300	28.0	ND	250

Semi-Annual Tests	Value in ug/l
Bis phthalate	ND
alph-BHC	ND
4,4' -DDT	ND
carbon tetrachloride	DNQ

Quarterly Tests	Value in ug/l
Dichlorobromomethane	ND
Bromoform	ND
Chlorodibromomethane	DNQ
Chloroform	2.64

SPILLS:						
None to report						
BOD mg/L	BOD LBS/DAY	BOD % Removal	NFR mg/L	NFR LBS/DAY	NFR % Removal	
23	213	91	22	199	93	

ACUTE TOXICITY	
DATE	% Survival
4/1/2014	100%
4/1/2014	90%

Rainbow Trout
C. dubia

CHRONIC TOXICITY	
TESTED	SURVIVAL
Minnow	N/A
C. Dubia	N/A
Algae	N/A
	TUc

Total Coliform
Monthly
MEDIAN
<1.8
Daily
Maximum
<1.8

SIGNATURE: _____

REMARKS:

 Indicates Permit Exceedance

McKINLEYVILLE COMMUNITY SERVICES DISTRICT
WASTEWATER MANAGEMENT FACILITY
MONITORING DATA

MONTH: MAY

YEAR: 2014

DATE	INFLUENT FLOW M.G.D.	EFFLUENT FLOW M.G.D.	EFFLUENT MAXIMUM GPM	RIVER CFS	INFLUENT MONITORING		(C°)		B.O.D.	NFR	EFFLUENT MONITORING			RIVER	SETTLABLE	3X5
					B.O.D. mg/L	N.F.R. mg/L	pH	TEMP	mg/L	mg/L	AMMONIA	CL ₂ RES.		CL ₂ RES	SOLIDS	TOTAL COLIFORM
1	0.835	0.329	788				7.2	18.0			30	1.5				
2	0.845	0.649	524		280	240	6.6	15.9	31	29	32	4.4			<0.1	
3	0.910	0.579	414													
4	0.952	0.528	451													
5	0.894	0.214	397				6.7	16.2			38	7.0				<1.8
6	0.839	0.000	0				Washed CCB									
7	0.839	0.371	1243				6.8	16.0			34	8.5				
8	0.842	0.445	638				6.5	16.0			36	6.2				
9	0.831	0.567	602		270	320	6.7	16.3	7.5	17	32	6.7			<0.1	
10	0.848	0.849	597													
11	0.898	0.835	591													
12	0.861	0.563	681				6.7	16.2			36	4.0				<1.8
13	0.840	0.747	959				6.8	16.9			32	3.7				
14	0.837	1.073	951				6.7	18.4			30	1.7				
15	0.842	1.028	938				6.6	17.7			36	1.9				
16	0.826	0.972	971		340	160	6.7	17.5	28	30	38	2.1			<0.1	
17	0.829	0.674	475													
18	0.883	0.669	472													
19	0.846	0.761	879				6.8	18.0			34	2.4				<1.8
20	0.850	1.044	955				7.3	19.6			28	4.3				
21	0.840	0.910	1295				7.1	20.0			34	3.8				
22	0.842	0.634	586				6.6	16.9			36	2.5				
23	0.810	0.639	584		300	270	6.6	17.2	21	22	36	3.5			<0.1	
24	0.796	0.609	430													
25	0.801	0.598	421													
26	0.880	0.601	424													
27	0.855	0.501	670				6.7	17.5			32	5.9				<1.8
28	0.834	0.453	612				6.7	17.1			34	6.1				
29	0.831	0.490	734				6.7	17.4			32	4.9				
30	0.796	0.478	797		290	200	6.7	18.2	21	21	32	4.8			<0.1	
31	0.815	0.449	319													

DATE	MONTHLY TESTS			
	TDS	AMMONIA	NITRATE	BORON
5/31/2014	290	35.0	ND	280

Semi-Annual Tests	Value in ug/l
Bis phthalate	N/A
alph-BHC	N/A
4,4' -DDT	N/A
carbon tetrachloride	N/A

Quarterly Tests	Value in ug/l
Dichlorobromomethane	N/A
Bromoform	N/A
Chlorodibromomethane	N/A
Chloroform	N/A

SPILLS:						
None to report						
BOD mg/L	BOD LBS/DAY	BOD % Removal	NFR mg/L	NFR LBS/DAY	NFR % Removal	
22	125	93	24	136	89	30 DAY AVERAGE

ACUTE TOXICITY	
DATE	% Survival
Rainbow Trout	N/A
C. dubia	N/A

CHRONIC TOXICITY	
TESTED	SURVIVAL
Minnow	N/A
C. Dubia	N/A
Algae	N/A
	TUC

Total Coliform
Monthly
MEDIAN
<1.8
Daily
Maximum
<1.8

SIGNATURE: _____

REMARKS:

 Indicates Permit Exceedance

McKINLEYVILLE COMMUNITY SERVICES DISTRICT
WASTEWATER MANAGEMENT FACILITY
MONITORING DATA

MONTH: JUNE

YEAR: 2014

DATE	INFLUENT FLOW M.G.D.	EFFLUENT FLOW M.G.D.	EFFLUENT MAXIMUM GPM	RIVER CFS	INFLUENT MONITORING		pH		(C°) TEMP	B.O.D. mg/L	NFR mg/L	EFFLUENT MONITORING		RIVER CL ₂ RES	SETTLABLE SOLIDS	3X5 TOTAL COLIFORM
					B.O.D. mg/L	N.F.R. mg/L						AMMONIA	CL ₂ RES.			
1	0.875	0.455	324													
2	0.839	0.589	800				6.6	17.3				36	4.9			<1.8
3	0.808	0.904	1201				6.6	17.0				36	6.9			
4	0.813	0.963	966				6.7	17.1				36	5.5			
5	0.809	0.836	998				6.6	16.9				36	7.1			
6	0.798	0.605	638		260	260	6.9	17.5		20	17	26	8.0		<0.1	
7	0.795	0.538	379													
8	0.867	0.539	380													
9	0.826	0.295	810				6.7	16.8				34	5.7			<1.8
10	0.811	0.000	0				Washed CCB									
11	0.802	0.448	950				6.9	17.0				34	5.9			
12	0.796	0.691	736				6.6	17.1				36	9.2			
13	0.796	0.748	734		330	250	6.6	17.0		23	13	34	6.5		<0.1	
14	0.796	0.666	473													
15	0.837	0.643	455													
16	0.833	0.607	918				6.7	17.2				36	4.1			<1.8
17	0.799	0.832	948				6.8	17.4				32	4.7			
18	0.808	0.949	947				6.9	17.4				26	4.9			
19	0.788	0.974	1173				6.8	17.6				36	4.3			
20	0.774	0.883	919		400	620	6.7	17.8		26	14	32	4.2		<0.1	
21	0.777	0.639	452													
22	0.824	0.630	448													
23	0.798	0.736	807				6.8	18.0				30	3.8			<1.8
24	0.782	0.946	844				6.7	18.1				36	3.7			
25	0.808	0.894	830				6.7	18.7				34	2.6			
26	0.782	0.795	695				6.8	19.0				36	1.7			
27	0.770	0.777	861		350	270	6.8	19.3		22	14	38	1.2		<0.1	
28	0.774	0.555	391													
29	0.811	0.551	390													
30	0.795	0.603	730				6.7	18.6				34	2.2			1.8
31																

DATE	MONTHLY TESTS			
	TDS	AMMONIA	NITRATE	BORON
6/30/2014	300	13.0	ND	300

Semi-Annual Tests	Value in ug/l
Bis phthalate	N/A
alph-BHC	N/A
4,4' -DDT	N/A
carbon tetrachloride	N/A

Quarterly Tests	Value in ug/l
Dichlorobromomethane	N/A
Bromoform	N/A
Chlorodibromomethane	N/A
Chloroform	N/A

SPILLS:

None to report

30 DAY AVERAGE	BOD mg/L	BOD LBS/DAY	BOD % Removal	NFR mg/L	NFR LBS/DAY	NFR % Removal
	23	145	93	15	90	95

ACUTE TOXICITY

DATE	% Survival
	N/A
	N/A
	N/A

Rainbow Trout
C. dubia

CHRONIC TOXICITY

TESTED	SURVIVAL
Minnow	N/A
C. Dubia	N/A
Algae	N/A
	TUc

Total Coliform
Monthly
MEDIAN
<1.8
Daily
Maximum
1.8

SIGNATURE: _____

REMARKS:

 Indicates Permit Exceedance

McKINLEYVILLE COMMUNITY SERVICES DISTRICT
WASTEWATER MANAGEMENT FACILITY
MONITORING DATA

MONTH: JULY

YEAR: 2014

DATE	INFLUENT FLOW M.G.D.	EFFLUENT FLOW M.G.D.	EFFLUENT MAXIMUM GPM	RIVER CFS	INFLUENT MONITORING		EFFLUENT MONITORING									3X5 TOTAL COLIFORM
					B.O.D. mg/L	N.F.R. mg/L	pH	(C°) TEMP	B.O.D. mg/L	NFR mg/L	AMMONIA	CL ₂ RES.	RIVER CL ₂ RES	SETTLABLE SOLIDS		
1	0.783	0.798	750				6.7	18.3			38	1.9				
2	0.769	0.878	752		350	240	6.7	18.6	20	7.6	36	1.4				
3	0.754	0.812	745				6.7	18.9			38	2.0		<0.1		
4	0.731	0.595	423													
5	0.734	0.588	417													
6	0.802	0.581	410													
7	0.792	0.701	767				6.7	19.1			36	1.4				<1.8
8	0.766	0.933	949				6.6	18.7			36	1.6				
9	0.783	0.969	979				6.6	19.2			36	1.3				
10	0.755	0.960	987				6.6	19.1			32	1.5				
11	0.749	0.888	1088		360	360	6.7	19.4	15	11	36	1.9		<0.1		
12	0.768	0.581	412													
13	0.813	0.577	408													
14	0.786	0.218	407				6.8	18.7			38	3.0				<1.8
15	0.780	0.000	0				Washed CCB									
16	0.762	0.644	2220				6.6	19.2			36	11.0				
17	0.763	0.937	1306				6.8	18.9			34	2.4				
18	0.761	0.700	1068		360	380	6.7	19.1	13	9	34	6.6		<0.1		
19	0.762	0.553	391													
20	0.793	0.548	386													
21	0.779	0.597	906				6.8	19.2			32	4.0				130.0
22	0.761	0.676	977				6.7	19.2			32	5.0				
23	0.771	0.887	1084				6.8	19.6			36	4.9				
24	0.775	1.118	1082				6.8	19.7			32	2.5				
25	0.767	0.819	933		310	320	6.7	19.2	17	12	32	6.3		<0.1		
26	0.753	0.485	343													
27	0.805	0.480	341													
28	0.793	0.706	1238				6.8	19.3			32	4.4				<1.8
29	0.762	0.772	1254				6.8	19.0			30	6.0				
30	0.785	0.681	1339				6.7	19.3			28	5.7				
31	0.758	0.663	1296				6.9	19.0			30	6.2				

DATE	MONTHLY TESTS			
	TDS	AMMONIA	NITRATE	BORON
7/31/2014	320	ND	N/A	320

Semi-Annual Tests	Value in ug/l
Bis phthalate	N/A
alph-BHC	N/A
4,4' -DDT	N/A
carbon tetrachloride	N/A

Quarterly Tests	Value in ug/l
Dichlorobromomethane	DNQ
Bromoform	ND
Chlorodibromomethane	ND
Chloroform	2.14

SPILLS:						
None to report						
BOD mg/L	BOD LBS/DAY	BOD % Removal	NFR mg/L	NFR LBS/DAY	NFR % Removal	
15	101	96	11	72	97	

30 DAY AVERAGE

ACUTE TOXICITY	
DATE	% Survival
	N/A
	N/A
	N/A

Rainbow Trout
C. dubia

CHRONIC TOXICITY	
TESTED	SURVIVAL
Minnnow	N/A
C. Dubia	N/A
Algae	N/A
	TUc

Total Coliform
Monthly MEDIAN
<1.8
Daily Maximum
130

SIGNATURE: _____

REMARKS:

 Indicates Permit Exceedance

McKINLEYVILLE COMMUNITY SERVICES DISTRICT
WASTEWATER MANAGEMENT FACILITY
MONITORING DATA

MONTH: AUGUST

YEAR: 2014

DATE	INFLUENT FLOW M.G.D.	EFFLUENT FLOW M.G.D.	EFFLUENT MAXIMUM GPM	RIVER CFS	INFLUENT MONITORING		EFFLUENT MONITORING									3X5 TOTAL COLIFORM
					B.O.D. mg/L	N.F.R. mg/L	pH	(C°) TEMP	B.O.D. mg/L	NFR mg/L	AMMONIA	CL ₂ RES.	RIVER CL ₂ RES	SETTLABLE SOLIDS		
1	0.756	0.831	1279		370	290	6.7	19	13	15	32	5.8		<0.1		
2	0.743	0.474	338													
3	0.796	0.468	332													
4	0.767	0.696	1176				6.7	19.0			32	6.2				<1.8
5	0.749	0.905	1131				6.7	19.1			30	7.6				
6	0.759	0.889	1071				6.9	18.8			30	7				
7	0.746	1.004	1100				6.7	19.0			30	7.8				
8	0.747	0.769	897		310	220	6.8	18.8	20	12	32	4.4		<0.1		
9	0.763	0.426	300													
10	0.792	0.426	301													
11	0.774	0.574	977				7.0	18.2			32	3.3				<1.8
12	0.750	0.708	1001				6.8	18.5			30	3				
13	0.759	0.631	840				6.8	18.6			26	3.6				
14	0.746	0.859	1018				6.7	19.0			30	2.0				
15	0.737	0.792	825		300	170	6.8	19.5	18	8.7	32	2.7		<0.1		
16	0.739	0.540	383													
17	0.792	0.540	382													
18	0.772	0.488	713				6.8	20.0			30	2.2				<1.8
19	0.769	0.778	1262				6.8	18.7			30	2.1				
20	0.762	0.813	972				6.7	19.3			30	1.3				
21	0.760	0.692	939				6.7	19.3			28	1.6				
22	0.753	0.832	1045		340	240	6.8	19.0	18	10	32	1.7		<0.1		
23	0.765	0.603	426													
24	0.851	0.596	421													
25	0.785	0.326	901				6.8	19.7			30	2.5				<1.8
26	0.766	0.000	0		Washed CCB											
27	0.769	0.732	1289				6.8	18.8			28	7.1				
28	0.754	1.030	1046				6.6	18.7			30	1.2				
29	0.737	0.913	1047		390	480	6.7	19.0	19	11	32	3.0		<0.1		
30	0.749	0.535	379													
31	0.751	0.535	378													

DATE	MONTHLY TESTS			
	TDS	AMMONIA	NITRATE	BORON
8/31/2014	290	25.0	ND	330

Semi-Annual Tests	Value in ug/l
Bis phthalate	N/A
alph-BHC	N/A
4,4' -DDT	N/A
carbon tetrachloride	N/A

Quarterly Tests	Value in ug/l
Dichlorobromomethane	N/A
Bromoform	N/A
Chlorodibromomethane	N/A
Chloroform	N/A

SIGNATURE: _____

REMARKS:

SPILLS:

None to report

30 DAY AVERAGE	BOD mg/L	BOD LBS/DAY	BOD % Removal	NFR mg/L	NFR LBS/DAY	NFR % Removal
	17	116	95	11	77	95

ACUTE TOXICITY

DATE	% Survival
Rainbow Trout	N/A
C. dubia	N/A
	N/A

CHRONIC TOXICITY

TESTED	SURVIVAL
Minnow	N/A
C. Dubia	N/A
Algae	N/A
	TUc

Total Coliform
Monthly
MEDIAN
<1.8
Daily
Maximum
<1.8

 Indicates Permit Exceedance

McKINLEYVILLE COMMUNITY SERVICES DISTRICT
WASTEWATER MANAGEMENT FACILITY
MONITORING DATA

MONTH: SEPTEMBER

YEAR: 2014

DATE	INFLUENT FLOW M.G.D.	EFFLUENT FLOW M.G.D.	EFFLUENT MAXIMUM GPM	RIVER CFS	INFLUENT MONITORING		(C°)		B.O.D.	NFR	EFFLUENT MONITORING		RIVER	SETTLABLE	3X5
					B.O.D. mg/L	N.F.R. mg/L	pH	TEMP	mg/L	mg/L	AMMONIA	CL ₂ RES.	CL ₂ RES	SOLIDS	TOTAL COLIFORM
1	0.846	0.524	372												
2	0.767	0.669	1133				6.9	18.8			30	2.3			<1.8
3	0.754	0.644	917				6.8	18.6			28	7.7			
4	0.750	0.632	1251				6.9	18.3			26	3.0			
5	0.747	0.535	917		300	422	6.8	18	12	11	32	2.6		<0.1	
6	0.781	0.491	348												
7	0.849	0.483	342												
8	0.780	0.683	928				6.9	17.7			30	3.0			<1.8
9	0.762	0.824	1420				6.8	17.7			30	2.8			
10	0.774	1.106	1175				6.8	17.5			32	4.7			
11	0.761	1.096	1120				6.9	17.6			28	5.6			
12	0.762	1.088	1130		380	400	6.8	17.3	4.6	12	32	5		<0.1	
13	0.774	0.513	370												
14	0.846	0.509	360												
15	0.771	0.897	1357				6.8	17.5			32	4.4			<1.8
16	0.757	1.288	1370				6.9	17.5			32	0.4			
17	0.770	1.056	1026				6.8	18.0			34	4.0			
18	0.767	1.124	1195				6.8	18.5			32	1.8			
19	0.763	0.949	1158		490	510	6.8	18.6	37	25	32	0.4		<0.1	
20	0.781	0.456	326												
21	0.846	0.445	314												
22	0.760	0.767	1193				6.8	19.1			32	0.8			<1.8
23	0.740	1.153	1191				6.8	21.6			32	1.5			
24	0.890	1.306	1403				6.8	19.4			32	1.6			
25	0.801	1.116	1231				6.9	18.4			28	0.1			
26	0.783	0.743	671		310	250	6.7	18.3	19	22	30	1.7		<0.1	
27	0.811	0.565	401												
28	0.862	0.564	398												
29	0.787	0.758	898				6.8	18.4			28	2.6			<1.8
30	0.794	1.062	987				6.7	18.5			28	2.2			
31															

DATE	MONTHLY TESTS			
	TDS	AMMONIA	NITRATE	BORON
9/30/2014	400	42.0	ND	330

Semi-Annual Tests	Value in ug/l
Bis phthalate	N/A
alph-BHC	N/A
4,4' -DDT	N/A
carbon tetrachloride	N/A

Quarterly Tests	Value in ug/l
Dichlorobromomethane	N/A
Bromoform	N/A
Chlorodibromomethane	N/A
Chloroform	N/A

SPILLS:

None to report

30 DAY AVERAGE	BOD mg/L	BOD LBS/DAY	BOD % Removal	NFR mg/L	NFR LBS/DAY	NFR % Removal
	18	126	95	18	123	95

ACUTE TOXICITY

DATE	% Survival
	N/A
	N/A
	N/A

Rainbow Trout
C. dubia

CHRONIC TOXICITY

TESTED	SURVIVAL
Minnow	N/A
C. Dubia	N/A
Algae	N/A
	TUc

Total Coliform
Monthly
MEDIAN
<1.8
Daily
Maximum
<1.8

SIGNATURE: _____

REMARKS:

 Indicates Permit Exceedance

McKINLEYVILLE COMMUNITY SERVICES DISTRICT
WASTEWATER MANAGEMENT FACILITY
MONITORING DATA

MONTH: OCTOBER

YEAR: 2014

DATE	INFLUENT FLOW	EFFLUENT FLOW	EFFLUENT MAXIMUM	RIVER CFS	INFLUENT MONITORING		EFFLUENT MONITORING									3X5
	M.G.D.	M.G.D.	GPM		B.O.D. mg/L	N.F.R. mg/L	pH	(C°) TEMP	B.O.D. mg/L	NFR mg/L	AMMONIA	CL ₂ RES.	RIVER CL ₂ RES	SETTLEABLE SOLIDS	TOTAL COLIFORM	
1	0.774	1.060	923				6.8	17.6			28	1.0				
2	0.794	0.896	979				6.8	17.5			28	1.9				
3	0.766	0.599	870		380	340	6.8	17.7	26	29	32	4.8		<0.1		
4	0.807	0.385	274													
5	0.854	0.385	275													
6	0.795	0.745	982				6.7	17.5			32	4.1			<1.8	
7	0.753	1.062	973				6.7	17.1			30	1.1				
8	0.786	0.765	1403				6.7	17.2			34	3.8				
9	0.769	0.682	576				6.8	17.2			36	5.2				
10	0.739	0.822	816		290	170	6.8	17.0	16	17	32	5.9		<0.1		
11	0.788	0.894	631													
12	0.840	0.886	625													
13	0.797	0.876	619													
14	0.779	0.791	868				7.1	16.7			38	11.0			<1.8	
15	0.788	0.902	763				7.2	16.6			28	2.6				
16	0.766	0.842	761				6.8	16.1			28	3.5				
17	0.763	0.586	648		330	310	6.8	16.8	18	14	30	6.6		<0.1		
18	0.808	0.285	203													
19	0.848	0.286	202													
20	0.854	0.732	1086				6.8	17.8			32	3.7			<1.8	
21	0.788	1.187	1086				6.9	17.1			30	5.1				
22	0.801	1.135	991				6.9	17.7			32	8.7				
23	0.933	1.050	995				6.9	17.8			36	7.2				
24	0.832	0.940	666		300	310	6.8	17.2	24	28	32	8.2		<0.1		
25	0.870	0.931	657													
26	0.908	0.931	663													
27	0.827	1.075	1209				7	15.8			32	8.5			<1.8	
28	0.793	1.403	1212				7.0	16.0			34	7.8				
29	0.810	1.393	1186				7.0	16.6			36	4.4				
30	0.800	1.242	1181				7.0	16.7			30	5.5				
31	0.855	1.037	790		320	380	7.1	16.6	20	26	36	5.3		<0.1		

DATE	MONTHLY TESTS			
	TDS	AMMONIA	NITRATE	BORON
10/31/2014	320	41.0	ND	290

Semi-Annual Tests	Value in ug/l
Bis phthalate	N/A
alph-BHC	N/A
4,4' -DDT	N/A
carbon tetrachloride	N/A

Quarterly Tests	Value in ug/l
Dichlorobromomethane	0.81
Bromoform	ND
Chlorodibromomethane	DNQ
Chloroform	11.7

SPILLS:						
None to report						
	BOD mg/L	BOD LBS/DAY	BOD % Removal	NFR mg/L	NFR LBS/DAY	NFR % Removal
30 DAY AVERAGE	21	138	94	23	155	92

ACUTE TOXICITY	
DATE	% Survival
Rainbow Trout	N/A
C. dubia	N/A
	N/A

CHRONIC TOXICITY	
TESTED	SURVIVAL
Minnow	N/A
C. Dubia	N/A
Algae	N/A
	TUc

Total Coliform
Monthly MEDIAN
<1.8
Daily Maximum
<1.8

SIGNATURE: _____

REMARKS:

 Indicates Permit Exceedance

McKINLEYVILLE COMMUNITY SERVICES DISTRICT
WASTEWATER MANAGEMENT FACILITY
MONITORING DATA

MONTH: NOVEMBER

YEAR: 2014

DATE	INFLUENT FLOW	EFFLUENT FLOW	EFFLUENT MAXIMUM	RIVER CFS	INFLUENT MONITORING		EFFLUENT MONITORING									3X5 TOTAL
	M.G.D.	M.G.D.	GPM		B.O.D. mg/L	N.F.R. mg/L	pH	(C°) TEMP	B.O.D. mg/L	NFR mg/L	AMMONIA	CL₂ RES.	RIVER CL₂ RES	SETTLEABLE SOLIDS	COLIFORM	
1	0.864	1.019	725													
2	0.901	1.006	719													
3	0.817	0.636	977				6.9	15.2			38	7.4			<1.8	
4	0.809	0.600	2377				7.1	16.6			36	5.7				
5	0.801	1.216	948				7	15.7			38	1.7				
6	0.820	1.379	970				7	16.5			36	4.0				
7	0.788	1.091	984		330	300	7.0	15.5	11	16	36	4.7		<0.1		
8	0.836	1.143	858													
9	0.855	1.271	911													
10	0.821	1.329	995				7.2	16.0			32	3.9			<1.8	
11	0.844	1.462	1040				7.2	15.3			36	4.6				
12	0.807	1.567	1129				7	15.2			36	2.5				
13	0.840	1.348	1127				7	15.7			36	3.8				
14	0.864	1.063	814		300	250	7.1	15.6	15	10	38	3.9		<0.1		
15	0.866	1.153	814													
16	0.898	1.148	812													
17	0.829	1.196	983				7.1	14.2			36	4.0			<1.8	
18	0.805	1.369	984				7.1	13.8			36	4.1				
19	0.858	1.376	977				7.2	14.8			32	4.3				
20	0.888	1.504	1327				7.1	14.4			36	5.5	0.00			
21	0.890	1.490	1409		300	380	7.2	13.9	12	12	34	5.3	0.00	<0.1		
22	1.071	1.764	1239				7.5	14.6				2.0	0.00			
23	0.976	1.579	1805				7.5	13.7				2.1	0.00			
24	0.901	0.856	906				6.9	13.5			34	3.7	0.00		<1.8	
25	0.905	1.206	1323		340	370	7.0	13.4	14	8	34	8.6	0.00			
26	0.887	1.892	1328				7.4	14.8			32	1.4	0.00	<0.1		
27	0.889	1.899	1338				7.4	14.0				1.5	0.00			
28	0.829	1.902	1342				7.3	14.1				1.4	0.00			
29	0.980	1.909	1341				7.3	14.1				1.5	0.00			
30	0.964	1.714	1333				7.5	13.6				1.3	0.00			

DATE	MONTHLY TESTS			
	TDS	AMMONIA	NITRATE	BORON
11/20/2014	330	35.0	ND	280

Semi-Annual Tests	Value in ug/l
Bis phthalate	DNQ
alph-BHC	ND
4,4' -DDT	ND
carbon tetrachloride	DNQ

Quarterly Tests	Value in ug/l
Dichlorobromomethane	N/A
Bromoform	N/A
Chlorodibromomethane	N/A
Chloroform	N/A

SPILLS:

None to report

30 DAY AVERAGE	BOD mg/L	BOD LBS/DAY	BOD % Removal	NFR mg/L	NFR LBS/DAY	NFR % Removal
	13	131	96	12	116	96

ACUTE TOXICITY

DATE	% Survival
11/25/2014	100%
11/25/2014	15%

Rainbow Trout
C. dubia

CHRONIC TOXICITY

TESTED	SURVIVAL
Minnow	N/A
C. Dubia	N/A
Algae	N/A
TUc	

Total Coliform
Monthly
MEDIAN
<1.8
Daily
Maximum
<1.8

SIGNATURE: _____

Indicates Permit Exceedance

REMARKS: Retesting for Acute C.Dubia was conducted. The 14 and 21 day retests have been sent to the lab.

McKINLEYVILLE COMMUNITY SERVICES DISTRICT
WASTEWATER MANAGEMENT FACILITY
MONITORING DATA

MONTH: DECEMBER

YEAR: 2014

DATE	INFLUENT FLOW M.G.D.	EFFLUENT FLOW M.G.D.	EFFLUENT MAXIMUM GPM	RIVER CFS	INFLUENT MONITORING		(C°)		B.O.D.	NFR	EFFLUENT MONITORING				3X5 TOTAL COLIFORM
					B.O.D. mg/L	N.F.R. mg/L	pH	TEMP	mg/L	mg/L	AMMONIA	CL ₂ RES.	RIVER CL ₂ RES	SETTLABLE SOLIDS	
1	0.889	0.925	1041	1060			7.4	14.5			36	2.1	0.00		<1.8
2	0.867	0.000	0	770			Washed CCB								
3	0.908	0.520	967	681			7.1	14.4			32	0.2	0.00		
4	0.871	0.723	516	789			7.1	13.7			36	1.9	0.00		
5	0.927	1.137	1135	936	230	240	7.1	14.1	14	7.6	32	3.9	0.00	<0.1	
6	1.061	1.674	1187	2730			7.2	14.7				4.2	0.00		
7	1.036	1.703	1196	1680			7.2	14.3				2.8	0.00		
8	0.956	1.701	1194	1620			7.2	15.1			32	2.8	0.00		<1.8
9	0.927	1.703	1198	1690			7.2	15.4			34	2.1	0.00		
10	1.010	1.672	1175	1200			7.1	14.8			36	2.0	0.00		
11	1.163	1.145	1141	3760			7.3	14.8			32	2.1	0.00		
12	1.135	0.993	857	6600	280	260	7	13.9	11	14	30	2.1	0.00	<0.1	
13	1.086	1.219	863	5010			7.2	13.4				3.7	0.00		
14	1.095	1.220	856	3070			7.2	13.2				1.8	0.00		
15	1.040	1.218	856	2210			7.1	13.3			28	1.9	0.00		<1.8
16	1.006	1.223	860	2020			7.2	13.1			28	1.9	0.00		
17	1.111	1.327	1003	2660			7.2	12.7			26	1.8	0.00		
18	1.063	1.220	1005	3930			7.3	12.5			24	1.6	0.00		
19	1.147	1.432	1215	4240	280	250	7.1	12.4	17	12	30	1.7	0.00	<0.1	
20	1.375	1.716	1215	4830			7.2	12.8				1.6	0.00		
21	1.753	1.779	1361	17800			7.2	13.1				2.0	0.00		
22	1.478	1.934	1356	10900			7.3	14.5			28	1.6	0.00		<1.8
23	1.302	2.106	1767	6130	260	240	7.0	13.0	16	13	32	3.2	0.00	<0.1	
24	1.327	2.500	1772	3910			7.1	14.0				2.6	0.00		
25	1.237	2.441	1727	3930			7.2	12.6				2.4	0.00		
26	1.177	2.479	1852	3040			7.4	11.7			30	2.1	0.00	<0.1	
27	1.148	2.341	1699	2590			7.5	11.7				2.2	0.00		
28	1.141	2.222	1585	2120			7.7	11.5				2.3	0.00		
29	1.116	1.496	1451	1790			7.1	11.6			30	2.1	0.00		<1.8
30	1.069	1.553	1592	1570	320	340	7.1	10.1	14	17	28	3.6	0.00		
31	1.070	1.778	1303	1240			7.5	10.0			28	2.1	0.00		

DATE	MONTHLY TESTS			
	TDS	AMMONIA	NITRATE	BORON
12/31/2014	290	20.0	ND	280

Semi-Annual Tests	Value in ug/l
Bis phthalate	DNQ
alph-BHC	ND
4,4' -DDT	ND
carbon tetrachloride	DNQ

Quarterly Tests	Value in ug/l
Dichlorobromomethane	0.81
Bromoform	ND
Chlorodibromomethane	DNQ
Chloroform	11.7

SPILLS:					
None to report					
BOD mg/L	BOD LBS/DAY	BOD % Removal	NFR mg/L	NFR LBS/DAY	NFR % Removal
15	177	94	12	140	95

ACUTE TOXICITY	
DATE	% Survival
Rainbow Trout 12/4/2014	100%
C. dubia 12/4/2014	85%
C. dubia 12/16/2014	100%

CHRONIC TOXICITY	
TESTED	SURVIVAL
Minnow	N/A
C. Dubia	N/A
Algae	N/A
	TUc

Total Coliform
Monthly
MEDIAN
<1.8
Daily
Maximum
<1.8

SIGNATURE: _____

REMARKS:

 Indicates Permit Exceedance

McKinleyville Community Services District

Wastewater Management Facility

Influent & Effluent Testing

pH, Temperature, Ammonia, CL₂ Res,

Settleable Solids, BOD, NFR =

pH, mg/L, ° C

AVERAGE ANNUAL 2014

INFLUENT			AMMONIA		UN-IONIZED	EFFLUENT			AMMONIA		UN-IONIZED	River			Coliform					
Date	pH	Temp	S.S	mg/L	NH ₃ (mg/L)	BOD	NFR		pH	Temp	D.O.	S.S.	mg/L	NH ₃ (mg/L)	NTU	CL ₂ Res	CL ₂ Res	3x5	BOD	NFR
JANUARY	7.9	15.3	20.4	44.2	1.670	294	436		7.0	10.0	3.2	<0.1	34.1	0.093	92.6	3.2	0.0	<1.8	38	35
FEBRUARY	7.8	15.4	25.0	42.1	1.848	390	308		6.9	11.6	3.2	<0.1	35.6	0.083	82.7	3.5	0.0	<1.8	41	26
MARCH	8.0	15.5	21.5	39.0	1.537	250	243		6.9	13.6	3.4	<0.1	32.6	0.078	73.3	2.4	0.0	<1.8	23	20
APRIL	7.9	16.4	22.5	41.0	1.892	260	340		6.9	14.9	3.3	<0.1	33.5	0.085	66.9	2.9	0.0	<1.8	23	20
MAY	7.8	17.9	21.8	41.7	1.300	296	238		6.8	17.4	3.0	<0.1	33.6	0.100	106.6	4.3	0.0	<1.8	22	24
JUNE	7.8	19.4	28.0	43.5	1.939	335	350		6.7	17.6	3.2	<0.1	33.9	0.086	134.3	4.9	0.0	<1.8	23	15
JULY	7.8	20.2	32.8	43.1	1.567	345	325		6.7	19.1	3.2	<0.1	34.0	0.095	69.9	3.9	0.0	<1.8	16	10
AUGUST	7.9	20.6	18.2	46.1	2.121	342	280		6.8	19.0	3.4	<0.1	30.3	0.090	57.8	3.8	0.0	<1.8	18	11
SEPTEMBER	7.9	20.8	28.0	45.1	2.099	370	396		6.8	18.3	3.3	<0.1	30.5	0.095	81.8	2.8	0.0	<1.8	18	18
OCTOBER	7.9	20.1	25.0	45.3	2.251	324	302		6.9	17.0	3.3	<0.1	32.1	0.106	75.8	5.3	0.0	<1.8	21	23
NOVEMBER	7.8	18.5	31.5	45.8	1.935	318	325		7.2	14.8	4.1	<0.1	35.3	0.163	52.1	3.7	0.0	<1.8	13	12
DECEMBER	7.8	16.9	18.2	41.1	1.276	274	266		7.2	13.2	4.5	<0.1	30.6	0.161	37.3	2.3	0.0	<1.8	14	13
																		MEDIAN		
Average	7.9	18.1	24.4	43.2	1.786	316	317		6.9	15.5	3.4	<0.1	33.0	0.103	77.6	3.6	0.0	<1.8	22	19
Maximum	8.0	20.8	32.8	46.1	2.251	390	436		7.2	19.1	4.5	<0.1	35.6	0.163	134.3	5.3	0.0	<1.8	41	35
Minimum	7.8	15.3	18.2	39.0	1.276	250	238		6.7	10.0	3.0	<0.1	30.3	0.078	37.3	2.3	0.0	<1.8	13	10

McKinleyville CSD
Waste Water Management Facility 30 Day Average
BOD & TSS Work Sheet 2014

DATE	Influent	Effluent	INF BOD	EFF BOD	INF TSS	EFF TSS	BOD mg/L	BOD lbs/day	BOD % Removal	TSS mg/L	TSS lbs/day	TSS % Removal
1/3/2014	0.789	0.976	250	34	350	34	34	277	86	34	277	90
1/10/2014	0.792	0.931	370	35	1100	36	35	272	91	36	280	97
1/17/2014	0.787	0.821	260	40	250	30	40	274	85	30	205	88
1/24/2014	0.776	0.820	320	38	270	30	38	260	88	30	205	89
1/31/2014	0.795	0.898	270	45	210	44	45	337	83	44	330	79
							38	284	87	35	259	89

Monthly Avg.

DATE	Influent	Effluent	INF BOD	EFF BOD	INF TSS	EFF TSS	BOD mg/L	BOD lbs/day	BOD % Removal	TSS mg/L	TSS lbs/day	TSS % Removal
2/7/2014	0.839	0.944	300	39	210	27	39	307	87	27	213	87
2/14/2014	1.144	1.432	380	45	260	28	45	537	88	28	334	89
2/21/2014	0.865	1.478	360	41	340	27	41	505	89	27	333	92
2/28/2014	0.850	1.077	520	39	420	23	39	350	93	23	207	95
							41	425	89	26	272	91

Monthly Avg.

DATE	Influent	Effluent	INF BOD	EFF BOD	INF TSS	EFF TSS	BOD mg/L	BOD lbs/day	BOD % Removal	TSS mg/L	TSS lbs/day	TSS % Removal
3/7/2014	0.874	1.262	240	29	220	21	29	305	88	21	221	90
3/14/2014	0.934	1.067	300	26	260	21	26	231	91	21	187	92
3/21/2014	0.875	1.116	270	19	260	18	19	177	93	18	168	93
3/28/2014	1.066	0.924	190	16	230	19	16	123	92	19	146	92
							23	209	91	20	180	92

Monthly Avg.

DATE	Influent	Effluent	INF BOD	EFF BOD	INF TSS	EFF TSS	BOD mg/L	BOD lbs/day	BOD % Removal	TSS mg/L	TSS lbs/day	TSS % Removal
4/4/2014	0.940	1.246	190	18	210	15	18	187	91	15	156	93
4/11/2014	0.887	1.249	240	17	580	16	17	177	93	16	167	97
4/18/2014	0.875	0.961	330	37	290	34	37	297	89	34	273	88
4/25/2014	0.873	1.086	280	21	280	22	21	190	93	22	199	92
							23	213	91	22	199	93

Monthly Avg.

DATE	Influent	Effluent	INF BOD	EFF BOD	INF TSS	EFF TSS	BOD mg/L	BOD lbs/day	BOD % Removal	TSS mg/L	TSS lbs/day	TSS % Removal
5/2/2014	0.845	0.649	280	31	240	29	31	168	89	29	157	88
5/9/2014	0.831	0.567	270	7.5	320	17	8	35	97	17	80	95
5/16/2014	0.826	0.972	340	28	160	30	28	227	92	30	243	81
5/23/2014	0.810	0.639	300	21	270	22	21	112	93	22	117	92
5/30/2014	0.796	0.478	290	21	200	21	21	84	93	21	84	90
							22	125	93	24	136	89

Monthly Avg.

DATE	Influent	Effluent	INF BOD	EFF BOD	INF TSS	EFF TSS	BOD mg/L	BOD lbs/day	BOD % Removal	TSS mg/L	TSS lbs/day	TSS % Removal
6/6/2014	0.798	0.605	260	20	260	17	20	101	92	17	86	93
6/13/2014	0.796	0.748	330	23	250	13	23	143	93	13	81	95
6/20/2014	0.774	0.883	400	26	620	14	26	191	94	14	103	98
6/27/2014	0.770	0.777	350	22	270	14	22	143	94	14	91	95
							23	145	93	15	90	95

Monthly Avg.

DATE	Influent	Effluent	INF BOD	EFF BOD	INF TSS	EFF TSS	BOD mg/L	BOD lbs/day	BOD % Removal	TSS mg/L	TSS lbs/day	TSS % Removal
7/2/2014	0.769	0.878	350	20	240	7.6	20	146	94	8	56	97
7/11/2014	0.749	0.888	360	15	360	11.0	15	111	96	11	81	97
7/18/2014	0.761	0.700	360	13	380	8.8	13	76	96	9	51	98
7/25/2014	0.767	0.819	310	17	320	12	17	116	95	12	82	96
							15	101	96	11	72	97
Monthly Avg.												

DATE	Influent	Effluent	INF BOD	EFF BOD	INF TSS	EFF TSS	BOD mg/L	BOD lbs/day	BOD % Removal	TSS mg/L	TSS lbs/day	TSS % Removal
8/1/2014	0.756	0.831	370	13	290	15	13	90	96	15	104	95
8/8/2014	0.747	0.769	310	20	220	12	20	128	94	12	77	95
8/15/2014	0.737	0.792	300	18	170	9	18	119	94	9	57	95
8/22/2014	0.753	0.832	340	18	240	10	18	125	95	10	69	96
8/29/2014	0.737	0.913	390	19	480	11	19	145	95	11	84	98
							17	116	95	11	77	95
Monthly Avg.												

DATE	Influent	Effluent	INF BOD	EFF BOD	INF TSS	EFF TSS	BOD mg/L	BOD lbs/day	BOD % Removal	TSS mg/L	TSS lbs/day	TSS % Removal
9/5/2014	0.747	0.535	300	12	422	11	12	54	96	11	49	97
9/12/2014	0.762	1.088	380	4.6	400	12	5	42	99	12	109	97
9/19/2014	0.763	0.949	490	37	510	25	37	293	92	25	198	95
9/26/2014	0.783	0.743	310	19	250	22	19	118	94	22	136	91
							18	126	95	18	123	95
Monthly Avg.												

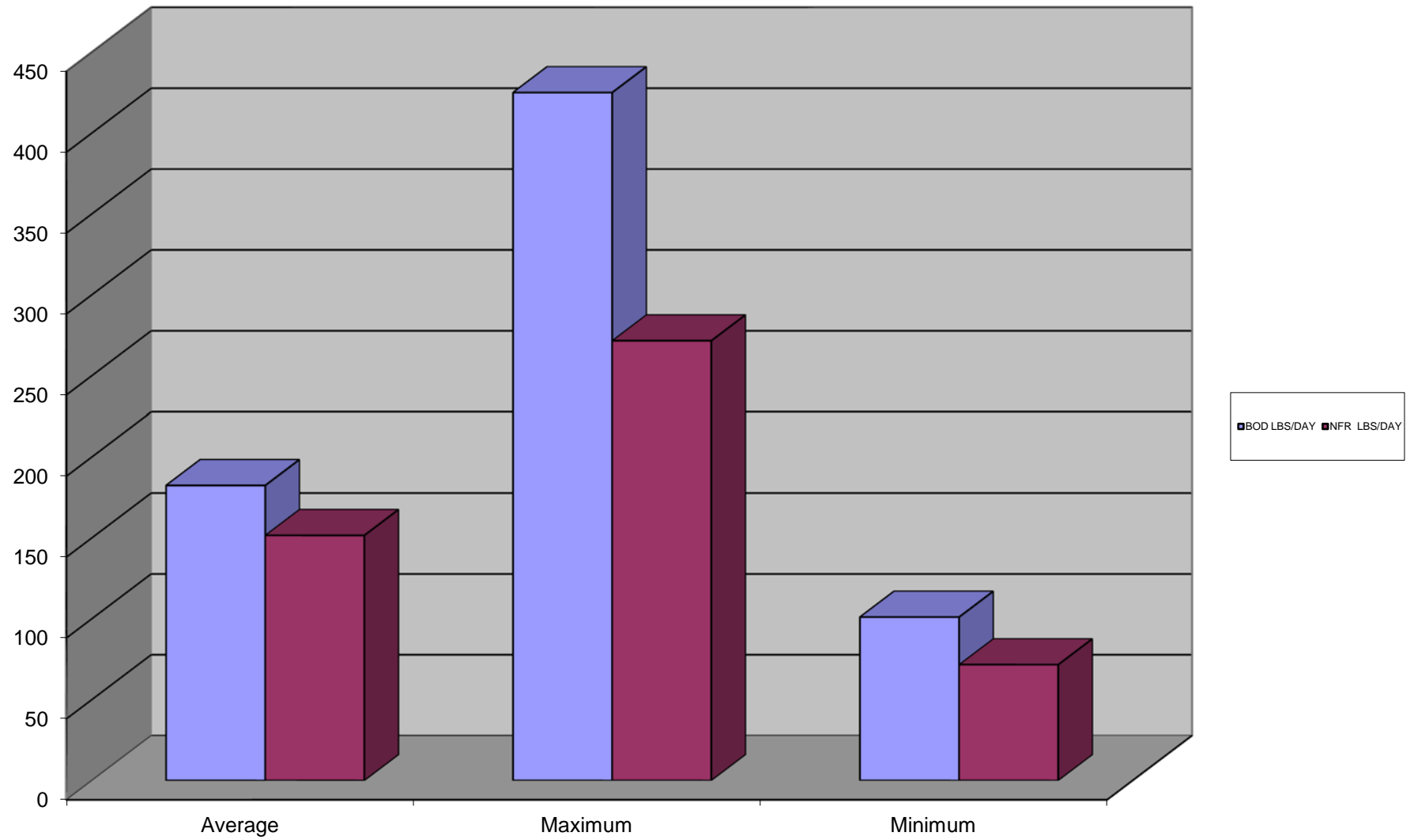
DATE	Influent	Effluent	INF BOD	EFF BOD	INF TSS	EFF TSS	BOD mg/L	BOD lbs/day	BOD % Removal	TSS mg/L	TSS lbs/day	TSS % Removal
10/3/2014	0.766	0.599	380	26	340	29	26	130	93	29	145	91
10/10/2014	0.739	0.822	290	16	170	17	16	110	94	17	117	90
10/17/2014	0.763	0.586	330	18	310	14	18	88	95	14	68	95
10/24/2014	0.832	0.940	300	24	310	28	24	188	92	28	220	91
10/31/2014	0.855	1.037	320	20	380	26	20	173	94	26	225	93
							21	138	94	23	155	92
Monthly Avg.												

DATE	Influent	Effluent	INF BOD	EFF BOD	INF TSS	EFF TSS	BOD mg/L	BOD lbs/day	BOD % Removal	TSS mg/L	TSS lbs/day	TSS % Removal
11/7/2014	0.788	1.091	330	11	300	16	11	100	97	16	146	95
11/14/2014	0.864	1.063	300	15	250	10	15	133	95	10	89	96
11/21/2014	0.890	1.490	300	12	380	12	12	149	96	12	149	97
11/25/2014	0.905	1.206	340	14	370	8	14	141	96	8	80	98
							13	131	96	12	116	96
Monthly Avg.												

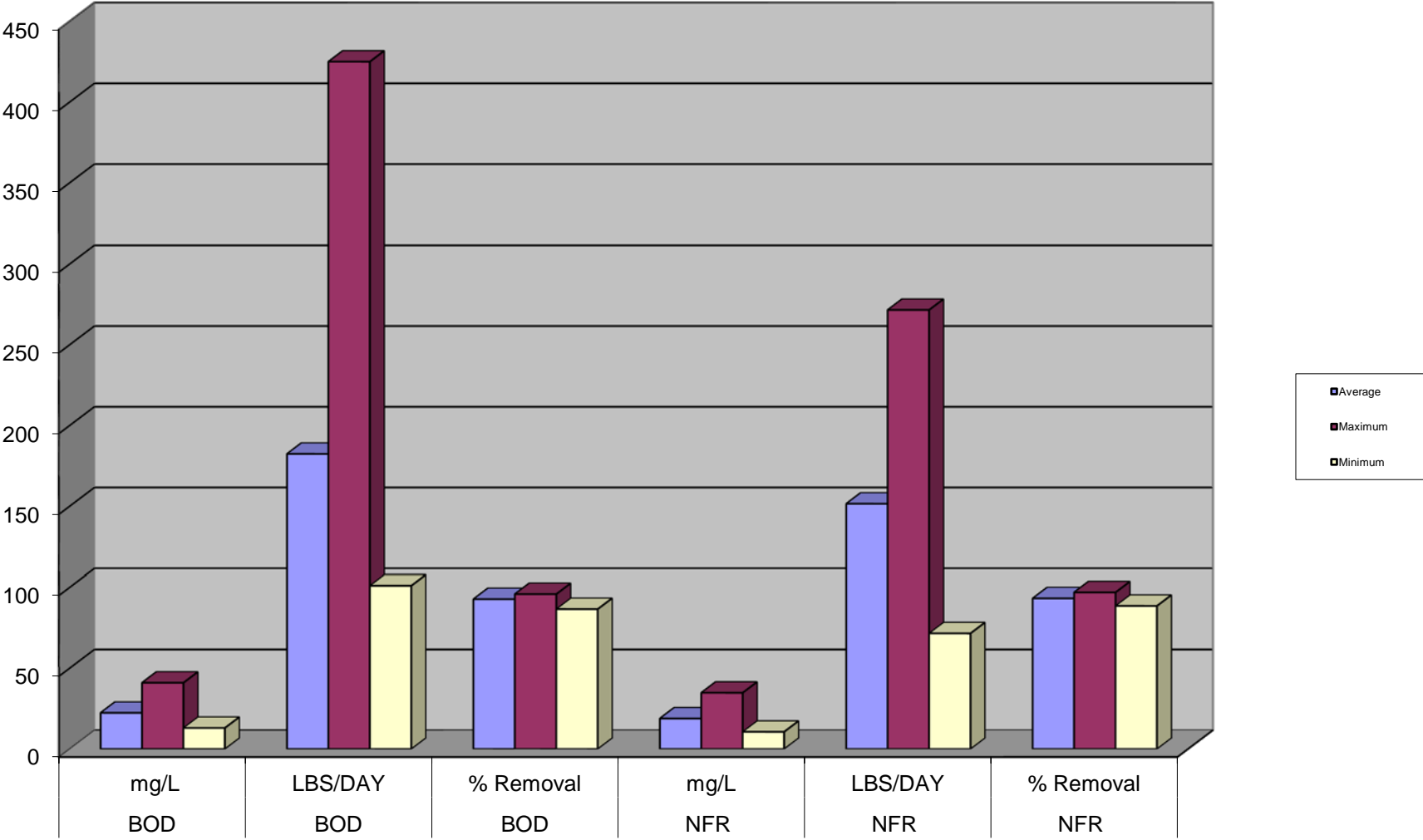
DATE	Influent	Effluent	INF BOD	EFF BOD	INF TSS	EFF TSS	BOD mg/L	BOD lbs/day	BOD % Removal	TSS mg/L	TSS lbs/day	TSS % Removal
12/5/2014	0.927	1.137	230	14	240	8	14	133	94	8	72	97
12/12/2014	1.135	0.993	280	11	260	14	11	91	96	14	116	95
12/19/2014	1.147	1.432	280	17	250	12	17	203	94	12	143	95
12/23/2014	1.302	2.106	260	16	240	13	16	281	94	13	228	95
12/30/2014	1.069	1.553	320	14	340	17	14	181	96	17	220	95
							15	177	94	12	140	95
Monthly Avg.												

2014 BOD & NFR 30 Day Average						
Average, Maximum and Minimum Totals						
Date	BOD mg/L	BOD LBS/DAY	BOD % Removal	NFR mg/L	NFR LBS/DAY	NFR % Removal
January	38	284	87	35	259	89
February	41	425	89	26	272	91
March	23	209	91	20	180	92
April	23	213	91	22	199	93
May	22	125	93	24	136	89
June	23	145	93	15	90	95
July	15	101	96	11	72	97
August	17	116	95	11	77	95
September	18	126	95	18	123	95
October	21	138	94	23	155	92
November	13	131	96	12	116	96
December	15	177	94	12	140	95
Average	22	182	93	19	152	93
Maximum	41	425	96	35	272	97
Minimum	13	101	87	11	72	89

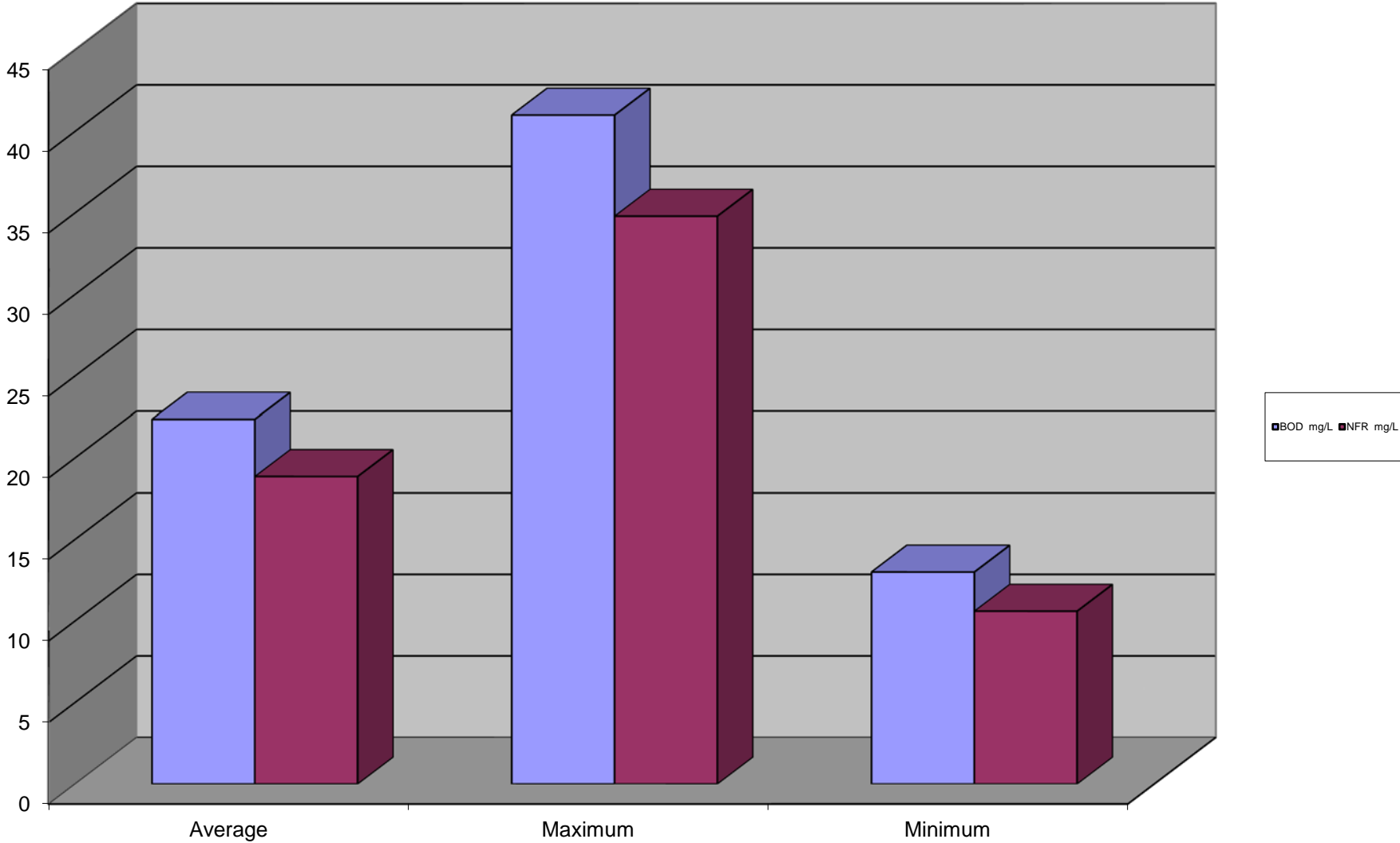
BOD & NFR 30 DAY AVERAGE LBS/DAY



30 Day BOD & NFR **Maximum, Minimum, and Average**



BOD & NFR 30 DAY AVERAGE mg/L



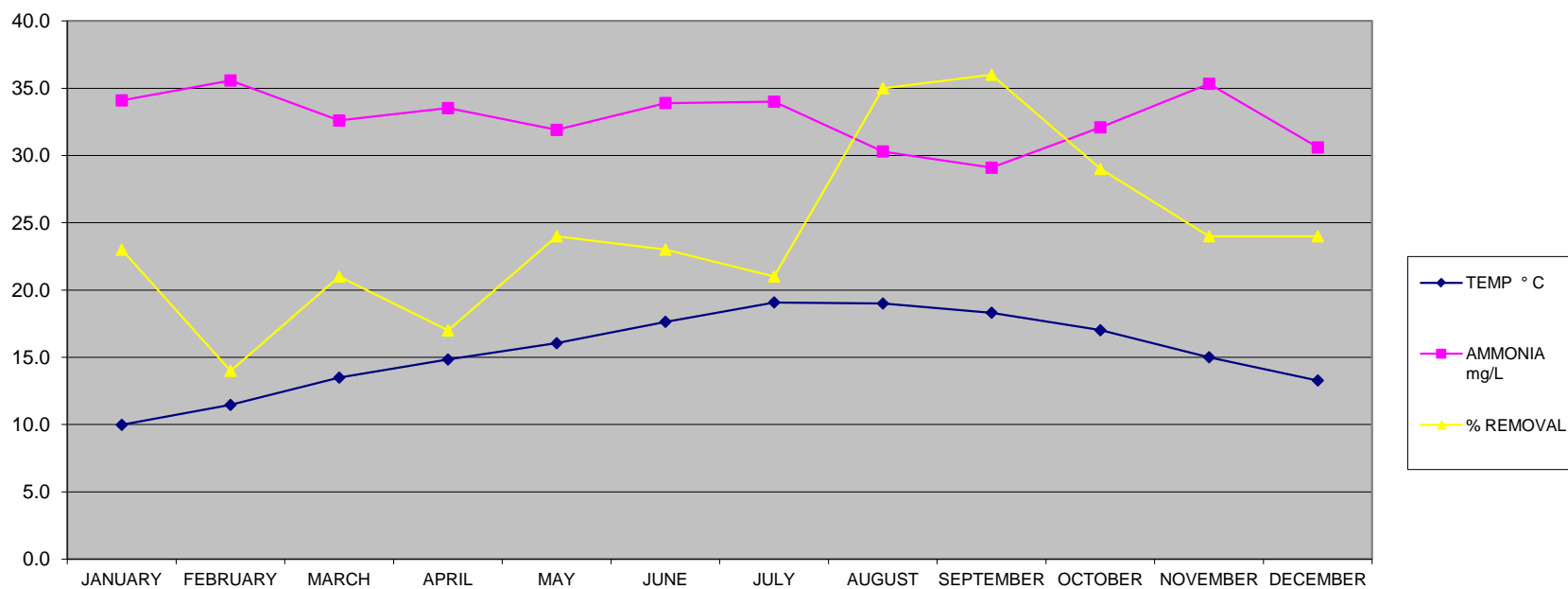
McKinleyville Community Services District
Wastewater Management Facility
2014 Influent, Terminal Pond, and Effluent BOD

MONTH		INFLUENT	EFFLUENT	POND 4	POND 5
		BOD	BOD	BOD	BOD
January	1/3/2014	250	34		60
	1/10/2014	370	35		61
	1/17/2014	260	40		61
	1/24/2014	320	38		54
	1/31/2014	270	45		49
February	2/7/2014	300	39		54
	2/14/2014	380	45		26
	2/21/2014	360	41		51
	2/28/2014	520	39		46
March	3/7/2014	240	29		43
	3/14/2014	300	26		37
	3/21/2014	270	19		26
	3/28/2014	190	16		32
April	4/4/2014	190	18		22
	4/11/2014	240	17		33
	4/18/2014	330	37		31
	4/25/2014	280	21		35
May	5/2/2014	280	31		40
	5/9/2014	270	7.5		42
	5/16/2014	340	28		37
	5/23/2014	300	21		41
	5/30/2014	290	21		36
June	6/6/2014	260	20		37
	6/13/2014	330	23		61
	6/20/2014	400	26		49
	6/27/2014	350	22		78
July	7/2/2014	350	20		150
	7/11/2014	360	15		61
	7/18/2014	360	13		82
	7/25/2014	310	17		31
August	8/1/2014	370	13		130
	8/8/2014	310	20		170
	8/15/2014	300	18		30
	8/22/2014	340	18		56
	8/29/2014	390	19		32
September	9/5/2014	300	12		87
	9/12/2014	380	4.6		130
	9/19/2014	490	37		170
	9/26/2014	310	19		28
October	10/3/2014	380	26		86
	10/10/2014	290	16		22
	10/17/2014	330	18		190
	10/24/2014	300	24		92
	10/31/2014	320	20		40
November	11/7/2014	330	11		26
	11/14/2014	300	15		22
	11/21/2014	300	12		13
	11/25/2014	340	14		19
December	12/5/2014	230	14		21
	12/12/2014	280	11		12
	12/19/2014	280	17		22
	12/23/2014	260	16		9
	12/30/2014	320	14		16
Average		315	22	0	55
Maximum		520	45	0	190
Minimum		190	4.6	0	9

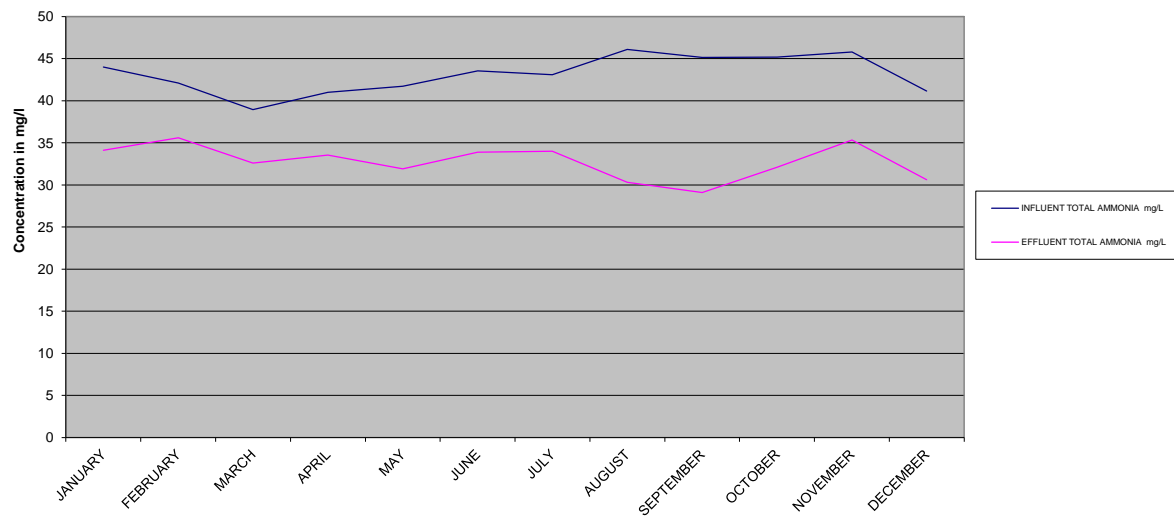
McKINLEYVILLE COMMUNITY SERVICES DISTRICT
WASTEWATER MANAGEMENT FACILITIES INFLUENT & EFFLUENT
AVERAGE AMMONIA, TEMPERATURE, pH, CALCULATED UN-IONIZED NH₃

ANNUAL MONTHLY AVERAGE 2014									
DATE	pH	TEMP ° C	INFLUENT TOTAL AMMONIA mg/L	UN-IONIZED NH ₃ (mg/L)	pH	TEMP ° C	EFFLUENT TOTAL AMMONIA mg/L	UN-IONIZED NH ₃ (mg/L)	% REMOVAL
JANUARY	7.9	15.3	44	1.670	7.0	10.0	34	0.093	23
FEBRUARY	7.9	15.5	42	1.848	6.9	11.5	36	0.083	14
MARCH	8.0	15.7	39	1.537	6.9	13.5	33	0.081	21
APRIL	7.9	16.5	41	1.892	6.9	14.8	34	0.086	17
MAY	7.8	17.9	42	1.300	6.4	16.0	32	0.095	24
JUNE	7.9	19.4	44	1.939	6.7	17.6	34	0.086	23
JULY	7.8	20.2	43	1.671	6.7	19.1	34	0.095	21
AUGUST	7.9	20.6	46	2.121	6.8	19.0	30	0.090	35
SEPTEMBER	7.9	20.8	45	2.099	6.8	18.3	29	0.095	36
OCTOBER	7.9	20.1	45	2.251	6.9	17.0	32	0.106	29
NOVEMBER	7.9	18.9	46	1.954	7.1	15.0	35	0.163	24
DECEMBER	7.8	17.1	41	1.276	7.2	13.3	31	0.161	24
AVERAGE	7.9	18.2	43.1	1.797	6.9	15.4	32.8	0.103	24
MAXIMUM	8.0	20.8	46.1	2.251	7.2	19.1	35.6	0.163	36
MINIMUM	7.8	15.3	39.0	1.276	6.4	10.0	29.1	0.081	14

Relationship Between Temperature and Removal of Monthly Averages



Average Total Ammonia



McKINLEYVILLE COMMUNITY SERVICES DISTRICT
MONITORING WELL DATA 2014

Location	W-001		W-002		W-006		W-007		W-008		W-009		W-014		W-015		W-016	
Quarter	Nitrate	TDS	Nitrate	TDS	Nitrate	TDS	Nitrate	TDS	Nitrate	TDS	Nitrate	TDS	Nitrate	TDS	Nitrate	TDS	Nitrate	TDS
January	15	260	5.7	120	15	260	16	240	13	220	17	250	1.6	84	ND	500	ND	6300
April	17	260	5.4	120	18	260	26	320	13	210	9.3	150	1.7	77	ND	790	ND	6200
July	12	210	4.8	120	21	290	23	370	16	260	23	310	2.6	96	ND	1200	ND	6100
October	15	230	5	140	23	370	16	270	19	350	24	380	2.5	110	0.38	830	ND	6600
AVERAGE	14.8	240.0	5.2	125.0	19.3	295.0	20.3	300.0	15.3	260.0	18.3	272.5	2.1	91.8	0.4	830.0	ND	6300.0
MAXIMUM	17.0	260.0	5.7	140.0	23.0	370.0	26.0	370.0	19.0	350.0	24.0	380.0	2.6	110.0	0.4	1200.0	ND	6600.0
MINIMUM	12.0	210.0	4.8	120.0	15.0	260.0	16.0	240.0	13.0	210.0	9.3	150.0	1.6	77.0	0.4	500.0	0.0	6100.0

Monitoring Well Levels					
Date	Well ID	T.O.C. Elevation	Depth of GW	G.W. elev. above sea level/ft	ft/inches
10/16/2014	W-001	63.61	23.66	39.95	479.4
10/16/2014	W-002	61.4	20.76	40.64	487.68
10/16/2014	W-006	15.7	6.95	8.75	105
10/16/2014	W-007	44.36	21.75	22.61	271.32
10/16/2014	W-008	61.24	19.14	42.1	505.2
10/16/2014	W-009	37.65	25.13	12.52	150.24
10/16/2014	W-014	60.15	17.78	42.37	508.44
10/16/2014	W-015	12.43	6.27	6.16	73.92
10/16/2014	W-016	16.08	8.97	7.11	85.32

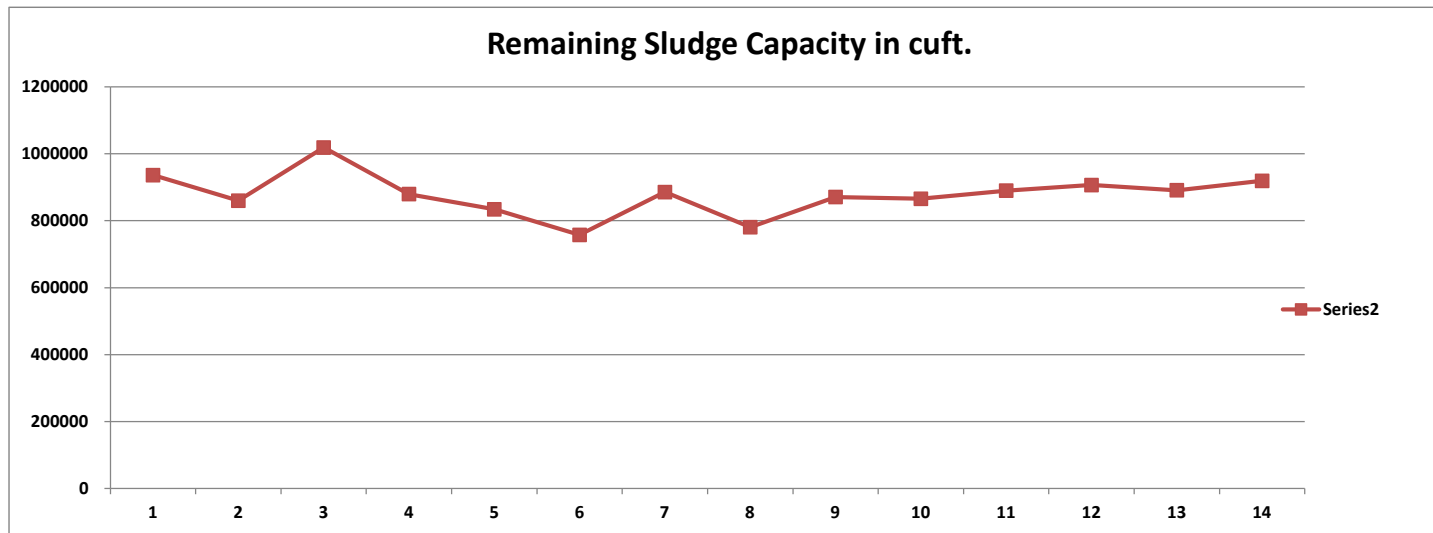
McKinleyville Community Services District
River Monitoring 2014

Upstream R-001											
Month	Date	Time	CFS	Temp	pH	D.O.	NTU	Conductivity	Ammonia	Hardness	TDS
January	1/10/2014	1015	87	11.2	7.1	11.1	0.54	121.3	ND		110
February	2/12/2014	1330	3220	11.2	7.1	14.5	15.4	133.9	ND	64	110
March	3/13/2014	1450	2560	13.6	7	10.3	40.8	66.7	ND	59	69
April	4/7/2014	0935	1080	12.6	6.9	9.1	17.7	208	ND	56	90
May	5/7/2014	0930	207	15.7	7.3	12.4	1.2	110.3	ND		100
June	6/4/2014	0925	102	16.4	7.2	9.4	0.66	147.2	ND		110
July	07/10/14	1350	55	20.9	7.5	6.0	1.4	212	ND		130
August	8/6/2014	1025	37	18.9	7.6	12.6	0	165.6	ND		140
September	9/3/2014	1055	32	22.4	7.6	7.1	0.53	178.6	ND		170
October	10/6/2014	1430	48	23.4	7.5	7.3	0.72	180.4	ND		140
November	11/20/2014	1310	395	13.1	7.6	10.1	4.72	86.7	ND	69	110
December	12/4/2014	1505	789	13.7	7.6	11.4	10.1	84.4	ND	75	100
Average				16.09	7.33	10.11	7.81	141.26	ND	64.60	114.92
Maximum				23.4	7.6	14.5	40.8	212.0	ND	75.0	170.00
Minimum				11.2	6.9	6.0	0.0	66.7	ND	56.0	69.00

Downstream R-002												
Month	Date	Time	CFS	Temp	pH	D.O.	NTU	Conductivity	Ammonia	Hardness	TDS	VISUAL IMPACT ON RIVER
January	1/10/2014	0955	87	11.1	6.8	12.2	1.15	2.9	ND		2800	River very low due to lack of rain
February	2/12/2014	1355	3220	11.9	7.0	10.7	18.1	117.3	0.89	68	200	
March	3/13/2014	1430	2560	12.5	7.4	12.1	46.9	115.1	ND	59	71	
April	4/7/2014	0910	1080	12.4	7.0	8.8	20.3	72.2	1.50	62	110	
May	5/7/2014	0900	207	15.7	7.3	8.6	1.24	172.1	0.12		130	
June	6/4/2014	0905	102	16.2	7.1	9.2	1.8	188.9	0.14		140	
July	07/10/14	1430	55	19.8	7.7	10.0	1.1	5.12	ND		4300	
August	8/6/2014	0955	37	17.8	7.5	11.4	1.42	2.6	ND		2,300	
September	9/3/2014	1020	32	18.6	7.3	8.2	1.4	3.24	0.19		2,700	
October	10/6/2014	1405	48	19.2	7.7	11.4	2.39	5.7	ND		5000	
November	11/20/2014	1330	395	12.4	7.8	10.1	4.53	91.9	ND	74	120	
December	12/4/2014	1440	789	14.3	7.6	11.3	10.1	84.4	ND	77	110	
Average				15.16	7.35	10.33	9.20	71.79	0.57	68.00	1498.42	
Maximum				19.8	7.8	12.2	46.9	188.9	1.5	77.0	5000.00	
Minimum				11.1	6.8	8.2	1.1	2.6	0.1	59.0	71.00	

WWMF M-001											
Month	Date	Time	CFS	Temp	pH	D.O.	NTU	Conductivity	Ammonia	Hardness	TDS
January	1/10/2014	1100	87	10.6	6.9	8.8	89.8	469.0	34		320
February	2/12/2014	1425	3220	13.2	6.7	7.3	90.4	454	27		300
March	3/13/2014	1345	2560	14.6	6.8	8.5	92.2	432	30		250
April	4/7/2014	0835	1080	15.2	6.9	4	48.1	418	28		300
May	5/7/2014	0950	207	16.1	6.6	6	82.0	500	35		290
June	6/4/2014	0950	102	17.1	6.7	2.4	144	470	13		300
July	07/10/14	1040	55	19.1	6.6	2.5	73.6	521.0	ND		320
August	8/6/2014	0905	37	18.8	6.9	3.8	55.2	365	25		290
September	9/3/2014	1000	32	18.8	6.7	6.4	68.1	481	42		400
October	10/6/2014	1140	48	17.5	6.7	3.4	84.2	439	41		320
November	11/20/2014	1340	395	14.1	6.9	6.7	48.2	423	35		330
December	12/4/2014	1520	789	20.8	7.2	7.1	32.2	445	20		290
Average				16.33	6.80	5.58	75.67	451.42	30.00	0.00	309.17
Maximum				20.8	7.2	8.8	144.0	521.0	42.0	0.0	400.00
Minimum				10.6	6.6	2.4	32.2	365.0	13.0	0.0	250.00

McKINLEYVILLE COMMUNITY SERVICES DISTRICT WASTEWATER MANAGEMENT FACILITY SLUDGE and SOLIDS MONITORING							FEBRUARY 2014		
POND 1 A				POND 1 B					
	CENTER	SOUTH	NORTH		CENTER	SOUTH	NORTH		
1	8	20	8		10	21	8		
2	5	36	9		9	17	10		
3	6	21	9		12	14	16		
4	6	33	8		10	11	16		
5	5	33	12		7	9	10		
6	6	28	12		8	9	12		
7	6	22	7		7	8	6		
8	6	20	20		8	11	10		
9	7	18	19		7	9	18		
10	7	13	16		7	8	16		
11	6	13	18		8	8	12		
12	6	12	11		9	9	9		
13	7	11	16		7	10	8		
14	7	11	9		7	9	10		
15	6	9	12		9	7	13		
16	6	10	18		8	10	14		
17	10	7	7		8	7	12		
18	8	8	12		7	8	11		
19	8	8	11		8	7	6		
20	9	12	20		10	10	13		
21	9	10	13		14	8	18		
22	12	12	9		13	12	16		
23	7	13	12		18	13	12		
24	12	12	12		21	17	8		
AVERAGE	7	16	13		10	11	12		
MAXIMUM	12	36	20		21	21	18		
MINIMUM	5	7	7		7	7	6		
ALL				POND A POND B					
AVERAGE	ALL	11		AVERAGE	12	11			
MAXIMUM	ALL	36		MAXIMUM	23	20			
MINIMUM	ALL	5		MINIMUM	6	7			
POND 1A	127,324	CUFT	AVERAGE POND 1A =					1.0	Ft. DEPTH
POND 1B	89,107	CUFT	AVERAGE POND 1B =					0.9	Ft. DEPTH
TOTAL 216,430 CUFT									
CAPACITY	POND A = 634,415 CUFT					POND B = 501,225 CUFT			
REMAINING	POND A = 507,091 CUFT					POND B = 412,118 CUFT			
TOTAL SLUDGE CAPACITY 1,135,640 CUFT									
TOTAL REMAINING SLUDGE CAPACITY 919,209 CUFT									



McKinleyville Community Services District
Wastewater Management Facility
Pond Ammonia Levels in mg/L
Annual Averages 2014

Date		Pond A	Pond B	Pond 2	Pond 3	Pond 4	Pond 5
January		34.5	35.5	38.0	34.5	35.0	36.5
February		34.5	34.0	34.0	35.0	37.0	37.0
March		30.4	31.6	32.4	34.4	35.6	36.4
April		29.5	29.5	29.5	29.0	32.5	33.5
May		25.5	28.5	29.5	30.5	31.5	33.3
June		30.4	31.6	32.8	34.4	35.2	36.4
July		32.5	33.5	33.5	33.0	32.0	33.0
August		36.5	33.0	33.0	30.5	30.5	31.5
September		43.2	34.4	34.8	30.8	30.8	31.6
October		33.5	38.0	33.0	33.5	33.0	33.0
November		22.0	31.0	34.5	34.0	36.5	36.5
December		drained	32.0	33.2	35.2	33.2	30.8
Average		32.0	32.7	33.2	32.9	33.6	34.1
Minimum		22.0	28.5	29.5	29.0	30.5	30.8
Maximum		43.2	38.0	38.0	35.2	37.0	37.0

McKinleyville Community Services District
Wastewater Management Facility
Pond Temperatures in C
Annual Averages 2014

								Average
Date		Pond A	Pond B	Pond 2	Pond 3	Pond 4	Pond 5	Pond Temp.
January		11.3	11.1	10.8	10.4	10.1	9.6	10.6
February		12.7	12.8	12.7	12.2	12.0	11.2	12.3
March		14.9	14.9	14.9	14.5	14.3	13.3	14.5
April		16.8	16.8	17.0	16.5	16.0	14.9	16.3
May		20.2	20.1	20.4	19.9	19.2	17.8	19.6
June		21.1	20.7	21.3	20.8	20.2	18.4	20.4
July		20.9	21.0	21.3	20.9	20.4	19.4	20.7
August		20.4	20.5	20.7	20.3	19.7	19.0	20.1
September		19.5	19.8	20.0	19.4	19.1	18.4	19.4
October		17.7	18.0	18.1	17.7	17.3	16.8	17.6
November		15.4	15.8	15.7	15.0	14.8	14.7	15.2
December		drained	14.2	13.8	13.2	13.0	13.0	13.5
Average		17.4	17.1	17.2	16.7	16.4	15.5	
Minimum		11.3	11.1	10.8	10.4	10.1	9.6	
Maximum		21.1	21.0	21.3	20.9	20.4	19.4	

McKinleyville Community Services District
Wastewater Management Facility
Pond pH
Annual Averages 2014

Annual Averages 2014								Average
Date		Pond A	Pond B	Pond 2	Pond 3	Pond 4	Pond 5	Pond pH
January		7.3	7.4	7.4	7.4	7.3	7.1	7.3
February		7.4	7.4	7.4	7.4	7.2	7.1	7.3
March		7.6	7.5	7.7	7.5	7.3	7.1	7.5
April		7.6	7.7	7.8	7.6	7.2	7.0	7.5
May		7.5	7.6	7.6	7.6	7.2	7.0	7.4
June		7.5	7.7	7.8	7.7	7.3	7.0	7.5
July		7.7	7.6	7.7	7.6	7.3	7.1	7.5
August		7.4	7.6	7.7	7.5	7.3	7.1	7.4
September		7.5	7.6	7.3	7.5	7.3	7.1	7.5
October		7.4	7.5	7.6	7.5	7.3	7.2	7.4
November		7.0	7.1	7.1	7.1	7.4	7.2	7.5
December		drained	7.3	7.4	7.4	7.3	7.2	7.3
Average		7.4	7.5	7.6	7.5	7.3	7.1	
Minimum		7.0	7.1	7.1	7.1	7.2	7.0	
Maximum		7.7	7.7	7.8	7.7	7.4	7.2	

McKinleyville Community Services District

Wastewater Management Facility

Pond Dissolved Oxygen in mg/L

Annual Averages 2014

								Average
Date		Pond A	Pond B	Pond 2	Pond 3	Pond 4	Pond 5	Pond D.O.
January		2.2	2.0	2.7	3.4	1.7	1.7	2.3
February		2.7	1.8	2.9	3.2	1.7	1.7	2.3
March		6.1	4.1	6.5	4.2	2.3	1.8	4.2
April		7.9	8.2	8.0	5.6	1.7	1.7	5.4
May		5.2	4.2	3.3	4.9	1.2	1.3	3.4
June		2.0	5.0	6.7	6.1	4.7	1.3	4.3
July		5.8	2.6	4.8	5.1	3.6	1.3	3.9
August		3.1	2.2	4.8	5.1	3.8	1.6	3.4
September		5.2	2.2	5.5	5.2	4.5	1.7	4.0
October		5.1	1.3	3.8	5.0	3.7	1.6	3.4
November		10.0	3.9	5.2	5.9	4.3	2.9	5.2
December		drained	2.5	3.2	5.8	5.2	3.1	3.9
Average		5.0	3.3	4.8	5.0	3.2	1.8	
Minimum		2.0	1.3	2.7	3.2	1.2	1.3	
Maximum		10.0	8.2	8.0	6.1	5.2	3.1	

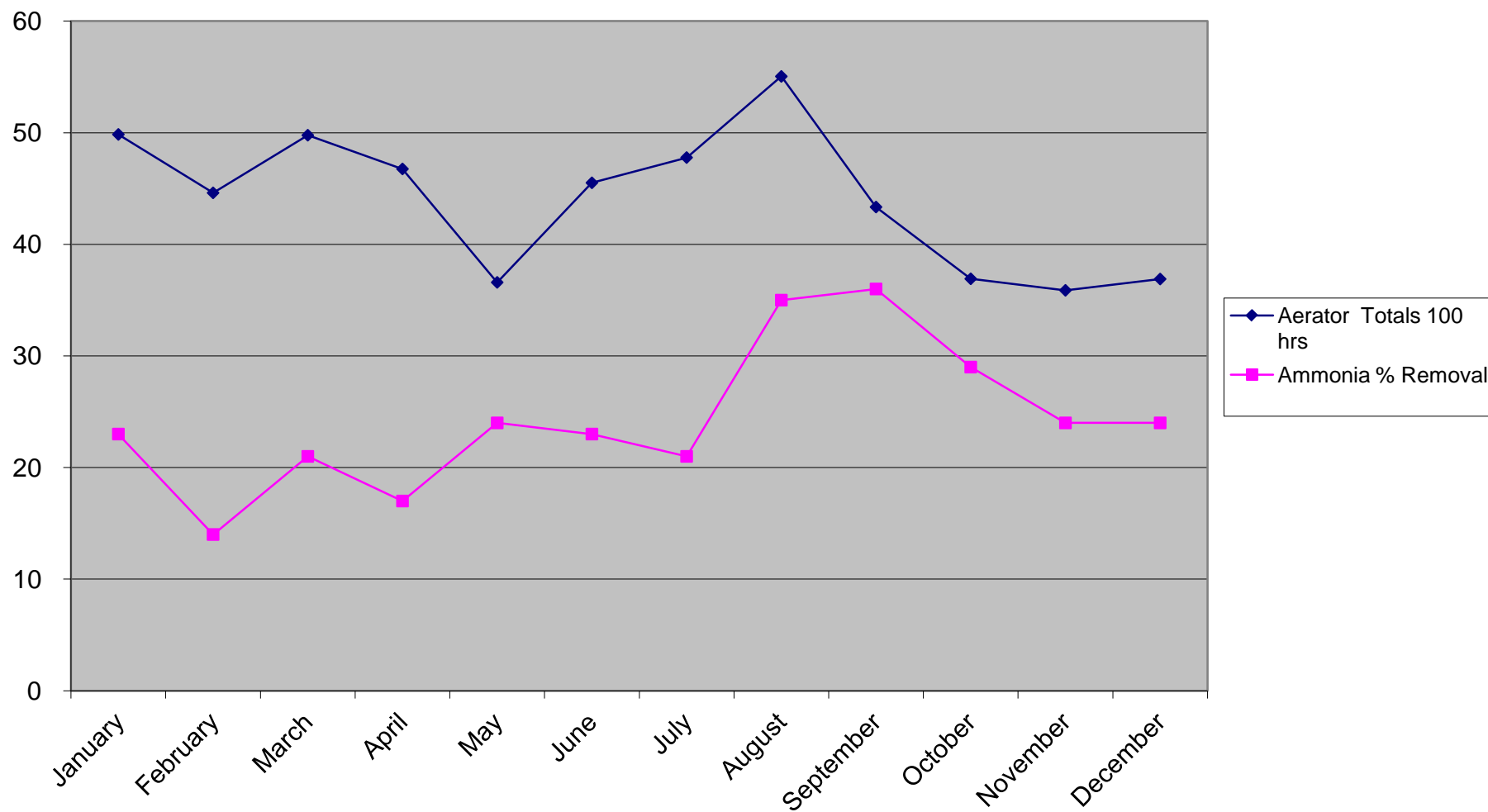
McKinleyville Community Services District
Wastewater Management Facility
Pond Depths, Elevation in Feet Above Sea Level
Annual Averages 2014

Annual Averages 2014								Average
Date		Pond A	Pond B	Pond 2	Pond 3	Pond 4	Pond 5	Pond Depth
January		62.5	62.5	61.9	61.7	61.6	61.5	61.9
February		62.5	62.8	62.0	61.8	61.5	61.1	62.0
March		62.1	62.1	61.7	61.4	61.2	60.9	61.6
April		62.3	61.2	61.6	61.3	61.1	60.9	61.4
May		61.6	61.6	61.3	61.2	61.1	61.0	61.3
June		61.5	62.0	61.7	61.5	61.5	61.2	61.6
July		61.2	62.4	61.6	61.3	61.3	61.1	61.6
August		60.9	62.5	61.7	61.4	61.4	61.2	61.5
September		61.3	62.3	61.6	61.3	61.3	60.9	61.4
October		61.0	62.3	61.6	61.4	61.3	60.7	61.4
November		58.3	63.0	62.1	61.7	61.4	60.7	61.3
December		drained	62.7	62.1	61.8	61.6	61.2	61.9
Average		61.4	62.3	61.7	61.5	61.4	61.0	
Minimum		58.3	61.2	61.3	61.2	61.1	60.7	
Maximum		62.5	63.0	62.1	61.8	61.6	61.5	

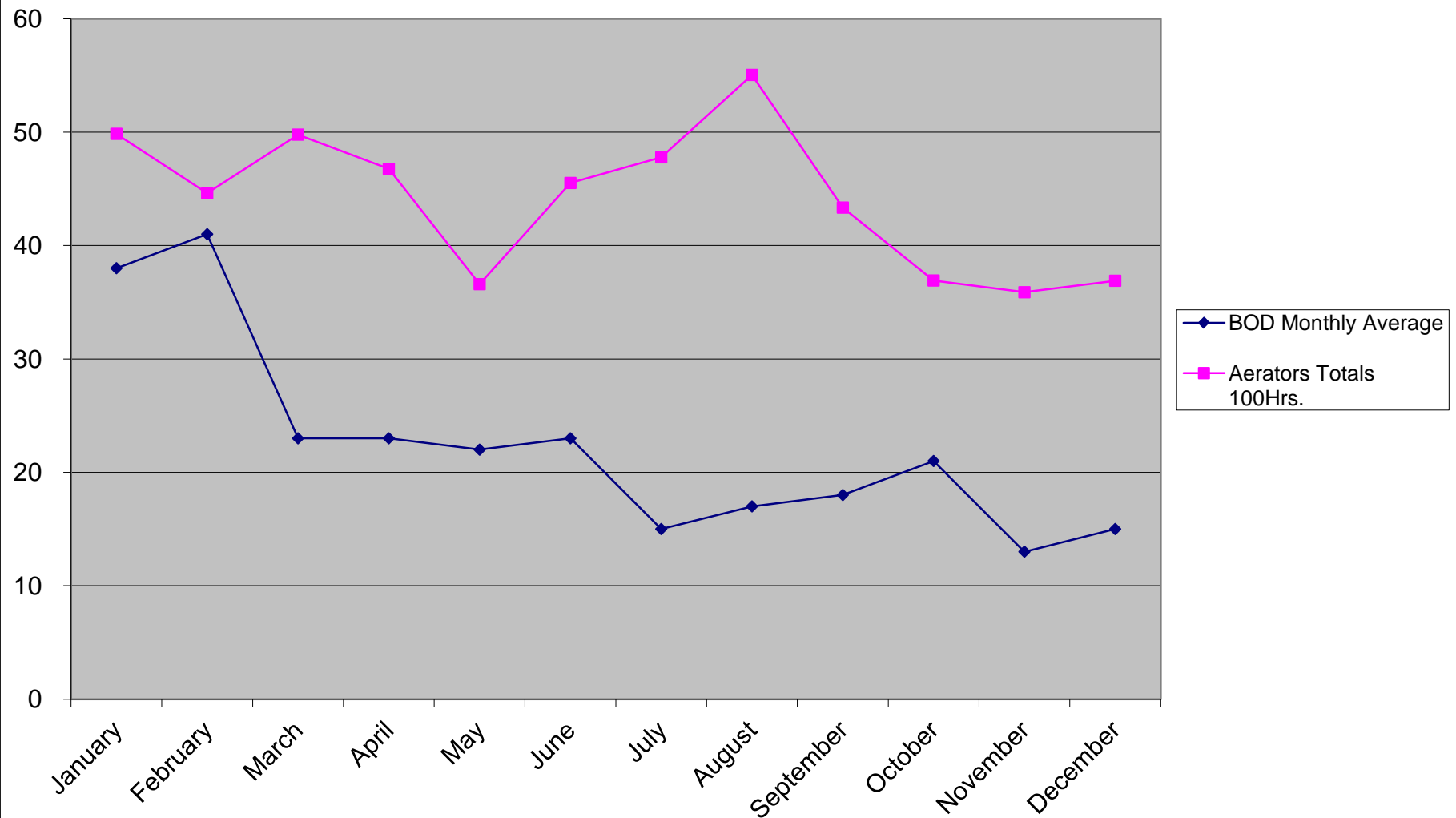
McKINLEYVILLE COMMUNITY SERVICES DISTRICT
WASTEWATER MANAGEMENT FACILITY
ANNUAL TOTAL AERATOR HOURS 2014

DATE	Pond A					Pond B					Pond		TOTALS
	1A	2A	3A	4A	5A	1B	2B	3B	4B	5B	2-A	3-A	
January	147.4	256.7	499.4	135.2	130.2	236.4	490.9	132.7	740.5	737.5	737.4	740.6	4984.9
February	129.7	220.1	461.6	123.9	118.5	209.8	438.6	119.0	666.1	661.6	666.1	646.5	4461.5
March	142.9	253.4	505.3	143.0	128.6	228.6	494.8	126.3	740.0	737.3	737.3	740.4	4977.9
April	137.4	236.4	483.1	137.5	123.4	223.3	462.2	118.7	690.7	681.6	689.2	692.2	4675.7
May	183.4	116.6	348.4	198.1	172.2	104.2	346.2	194.4	504.6	504.2	481.9	505.0	3659.2
June	273.9	368.2	469.6	276.5	161.4	237.2	466.6	167.5	565.2	566.7	479.1	519.5	4551.4
July	143.9	256.4	502.4	149.6	152.3	239.5	675.0	146.6	588.9	706.4	503.6	713.0	4777.6
August	142.1	251.3	738.1	147.3	136.8	234.7	743.4	136.3	743.5	743.6	743.7	744.0	5504.8
September	141.4	247.4	396.1	142.0	128.0	396.3	519.7	125.6	543.6	606.9	543.6	543.7	4334.3
October	148.1	246.0	335.9	142.1	132.5	235.9	332.2	139.8	493.1	495.3	495.2	495.3	3691.4
November	139.4	242.4	326.4	139.7	127.9	237.9	323.9	133.1	479.3	479.2	479.4	479.3	3587.9
December	142.7	257.2	335.2	146.0	134.8	236.7	329.6	131.3	494.0	493.9	493.9	494.0	3689.3
TOTAL	1872.3	2952.1	5401.5	1880.9	1646.6	2820.5	5623.1	1671.3	7249.5	7414.2	7050.4	7313.5	52895.9
AVERAGE	156.0	246.0	450.1	156.7	235.0	468.6	468.6	139.3	604.1	617.9	587.5	609.5	4408.0
MAXIMUM	273.9	368.2	738.1	276.5	396.3	743.4	743.4	194.4	743.5	743.6	743.7	744.0	5504.8
MINIMUM	129.7	116.6	326.4	123.9	104.2	323.9	323.9	118.7	479.3	479.2	479.1	479.3	3587.9

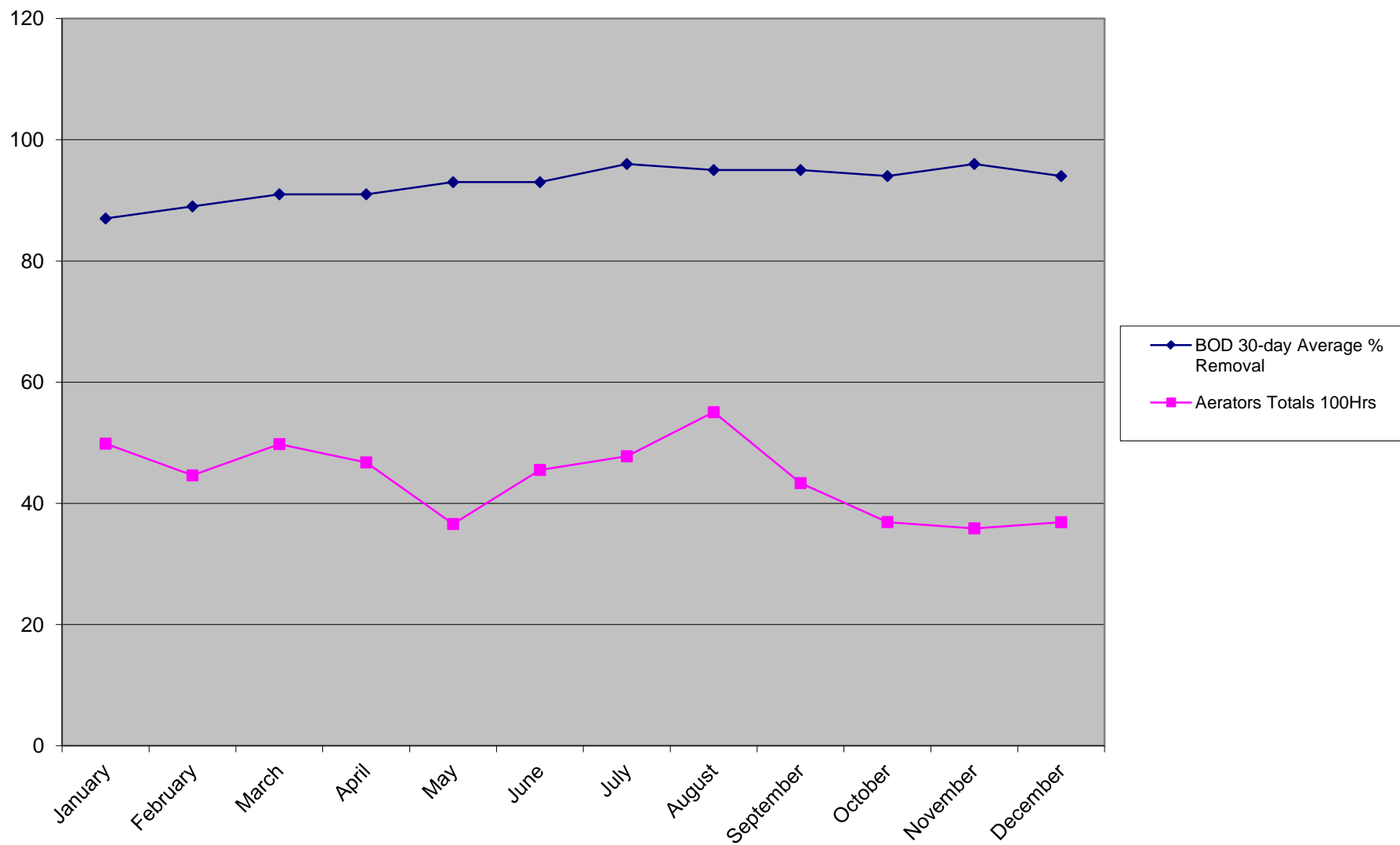
Aerator Hours Versus Ammonia Percent Removal



Aerator Hours Versus Effluent BOD



Aerator Hours Versus BOD 30-day Average % Removal



MCKINLEYVILLE COMMUNITY SERVICES DISTRICT
WASTEWATER MANAGEMENT FACILITY
ELECTRIC, CL₂, SO₂, WATER and RAIN DATA
ANNUAL 2014

DATE	PG&E	CL ₂ USAGE	SO ₂ USAGE	RAIN
	kw Hours	lbs.	lbs.	inches
JANUARY	30000	5251	0	2.20
FEBRUARY	30640	6914	1215	8.01
MARCH	25280	7191	1385	8.75
APRIL	19600	6271	1124	2.03
MAY	28320	4253	0	0.90
JUNE	37120	4418	0	0.64
JULY	47040	4548	0	0.00
AUGUST	47200	3833	0	0.00
SEPTEMBER	41280	4361	0	3.47
OCTOBER	38000	5224	0	6.00
NOVEMBER	44960	3242	409	5.46
DECEMBER	43760	1595	1264	12.10

TOTAL	433200	57101	5397	49.56
AVERAGE	36100	4758	450	4.13
MAXIMUM	47200	7191	1385	12.10
MINIMUM	19600	1595	0	0.00

WWMF WATER METER			
DATE	LOW	HIGH	CU.FT.
START	36262	98517	
END	39876	105892	10989

SPECIAL TESTING

DATE	INFLUENT		ALKALINITY	NITRATE	EFFLUENT		ALKALINITY	NITRATE
	TKN Grab	TKN Comp.			TKN Grab	TKN Comp.		
1/3/2014	70	76	300	ND	48	43	230	ND
1/10/2014	100	100	320	ND	64	69	220	ND
1/17/2014	63	50	280	ND	44	42	220	ND
1/24/2014	62	86	260	ND	44	43	220	ND
1/31/2014	76	56	330	ND	42	44	230	ND
2/7/2014	72	50	300	ND	44	45	220	ND
2/14/2014	60	40	250	ND	41	41	190	ND
2/21/2014	78	54	290	ND	42	40	200	ND
2/28/2014	63	47	270	ND	39	38	200	ND
3/7/2014	50	44	240	ND	38	36	200	ND
3/14/2014	51	48	250	ND	40	38	200	ND
3/21/2014	55	39	240	ND	34	37	200	ND
3/28/2014	40	38	200	ND	33	37	200	ND
4/4/2014	63	45	240	ND	41	39	190	ND
4/11/2014	66	44	290	ND	37	37	190	ND
4/18/2014	81	56	300	ND	43	36	210	ND
4/25/2014	51	42	230	ND	33	34	180	ND
5/2/2014	75	48	290	ND	40	42	200	ND
5/9/2014	64	46	270	ND	38	37	200	ND
5/16/2014	78	52	310	ND	43	41	200	ND
5/23/2014	86	59	310	ND	49	59	210	ND
5/30/2014	67	41	290	ND	36	27	210	ND
6/6/2014	74	58	340	ND	26	35	210	ND
6/13/2014	77	41	320	ND	38	33	220	ND
6/20/2014	89	60	340	ND	53	39	220	ND
6/27/2014	100	58	370	ND	49	55	230	ND
7/2/2014	80	44	350	ND	41	36	230	ND
7/11/2014	41	55	240	ND	36	38	230	ND
7/18/2014	72	56	330	ND	39	43	230	ND
7/25/2014	76	71	320	ND	42	42	220	ND
8/1/2014	79	55	350	ND	33	27	220	ND
8/8/2014	66	51	250	ND	33	34	220	ND
8/15/2014	58	54	320	ND	28	27	220	ND
8/22/2014	58	61	330	ND	30	33	210	ND
8/29/2014	87	65	350	ND	35	34	210	ND
9/5/2014	86	44	380	ND	29	29	230	ND
9/12/2014	88	55	360	ND	38	35	230	ND
9/20/2014	91	66	360	ND	35	37	230	ND
9/26/2014	75	70	350	ND	34	36	200	ND
10/3/2014	78	51	350	ND	33	32	200	ND
10/10/2014	58	49	290	ND	35	30	220	ND
10/17/2014	55	50	340	ND	30	28	220	ND
10/24/2014	63	53	310	ND	37	28	220	ND

11/7/2014	68	62	340	ND	42	32	250	ND
11/14/2014	44	48	320	ND	30	34	240	ND
11/21/2014	54	43	320	ND	37	24	240	ND
11/25/2014	48	60	280	ND	28	32	230	ND
12/5/2014	82	69	320	ND	48	36	230	ND
12/12/2014	63	70	270	ND	34	39	190	ND
12/19/2014	99	64	280	ND	46	34	210	ND
12/23/2014	76	82	240	ND	39	45	190	ND
12/30/2014	75	66	260	ND	38	34	180	ND